

20-24 Apollo Drive
 Hallam, Victoria, 3803
 (03) 8770 9600
 stealthproducts.com



EXCLUSIVE TO STEALTH PRODUCTS

No matter the season or the situation, the patented and award-winning CoolCore fabric wicks moisture away from your body, helping keep you dry and comfortable. The chemical-free blends of the fabric also help with moisture transportation and moisture evaporation, making our cushions cool better and last longer.

STEALTH PRODUCTS CUSHION SPECIFICATIONS

Cushion Name	Weight Capacity	Weight of Cushion	Cushion Height	Width Range	Depth Range
Simplicity G	204 kgs	0.9 kgs	2"	16" - 24"	16" - 20"
Zen SP	204 kgs	1.5 kgs	3"	10" - 24"	10" - 24"
Glacial SP	181 kgs	1.1 kgs	2.5"	10" - 24"	10" - 24"
Premiere P	204 kgs	1.5 kgs	3.5"	16" - 22"	16" - 22"
Spectrum Foam SPP	294 kgs	1.3 kgs	3"	16" - 32"	16" - 28"
Spectrum Gel SPP	226 kgs	1.5 kgs	3"	14" - 24"	16" - 24"
Solution SPP	226 kgs	2.4 kgs	3"	10" - 24"	10" - 22"
Tru Comfort 2 SPP	204 kgs	1.8 kgs	4.5"	16" - 22"	16" - 24"
Essence SPP	226 kgs	1.5 - 2.2 kgs	3.5"	16" - 22"	16" - 24"

**SOLUTIONS
FOR LIFE**





CUSHION COLOUR GUIDE

To make your cushion selection process easier, Stealth Products Cushions are marked with a colour coded patch. The colour of the patch identifies the function.



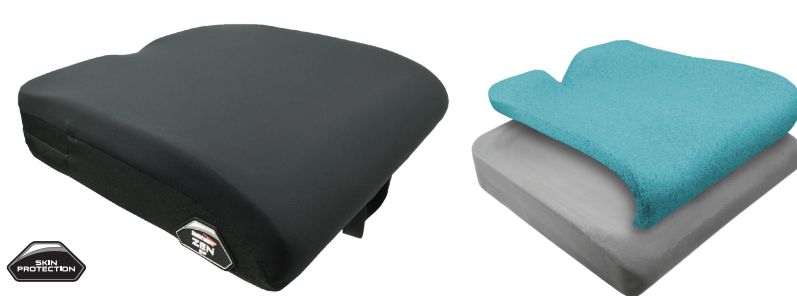
stealthproducts.com



SIMPLICITY G

Features:

- Contoured, high-density molded foam base
- Coccyx and sacral relief
- Moisture resistant and easy to clean Stealth-Tek incontinence cover.
- Sizes available - 16" - 24"W x 16" - 20"D



ZEN SP

Features:

- Slightly Contoured, high-density molded foam base
- FRG Comfort foam topper for skin protection
- Standard Visco topper (exclusive FRG SunMate) for added comfort
- FRG SunMate is an all natural flame retardant material.
- Coccyx and sacral relief
- CoolCore® technology cover standard.
- Optional Urethane liner
- 4-Way Stretch Poly Liner optional
- Sizes available - 10"-24"W x 10"-24"D



GLACIAL SP

Features:

- Contoured, high-density molded foam base
- Soft gel top layer for skin protection
- Coccyx and sacral relief
- CoolCore® technology cover standard.
- 4-Way Stretch Poly or Urethane liner optional
- Sizes available - 10"-24" W x 10"-24"D



PREMIERE P

Features:

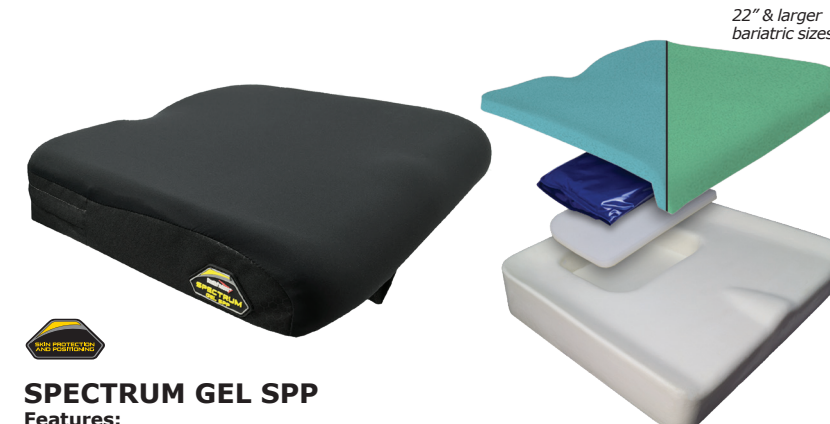
- Lateral and pre-ischial shelf contoured, high-density specially formulated molded foam base
- Built-in positioning platform for off loading
- Standard Visco topper (exclusive FRG SunMate) for added comfort
- FRG SunMate is an all natural flame retardant material.
- Coccyx and sacral relief
- Sizes available - 16"-20"W x 16"-20"D 18" x 22", 20" x 22" 22" x 22" Coming Soon
- CoolCore® technology cover standard.
- Optional Urethane liner
- Optional 4-Way Stretch Poly liner



SPECTRUM FOAM SPP

Features:

- Lateral and pre-ischial shelf contoured, high-density molded foam base
- Multi-layer, viscoelastic foam insert under at risk bony areas
- CoolCore® technology cover standard.
- Urethane liner for incontinence
- 4-Way Stretch Poly liner optional
- Sizes available - 16" - 32"W x 16" - 28"D



SPECTRUM GEL SPP

Features:

- Lateral and pre-ischial shelf contoured, high-density molded foam base
- Twin-cell, lightweight fluid insert under at risk bony areas
- CoolCore® technology cover standard.
- Urethane liner for incontinence
- 4-Way Stretch Poly liner optional
- Sizes available - 14" - 24"W x 16" - 24"D



SOLUTION SPP

Features:

- Lateral and pre-ischial shelf contoured, high-density molded foam base
- Twin-cell, aqueous gel insert under at risk bony areas
- CoolCore® technology cover standard.
- Urethane liner for incontinence
- Sizes available - 10" - 24"W x 10" - 22"D
- 4-Way Stretch Poly liner optional



TRU-COMFORT 2 SPP

Features:

- Deep contoured, high-density molded foam base
- CoolCore Technology cover standard.
- Easy pull rubber loop zipper handles
- Convenient side pouches on both sides of the cushion
- Sizes available - 16" - 22"W x 16" - 24"D
- 4-Way Stretch Poly liner optional



ESSENCE SPP

Features:

- Lateral and pre-ischial shelf contoured, high-density specially formulated molded foam base.
- Coccyx and sacral relief.
- CoolCore® technology cover standard.
- 4-Way Stretch Poly liner optional.
- Sizes available - 16"-22"W x 16"-24"D
- Adjustable contour wedge package provides better positioning customization for the pelvic region. Wedge height from 0.5" - 2" with the wedge kit.