

 **JAY**[®]

CUSHIONS & BACKS

AUSTRALIA



PRODUCT RATING

See “JAY Product Comparison Guide” notes to the right.

Cushions		Type	Page #	Lateral Stability					Forward Stability					Pressure Management				
JAY® Basic	Comfort	5	1	2	3	4	5	1	2	3	4	5	1	2	3	4	5	
JAY® Basic ^{PRO} ™	Comfort	5	1	2	3	4	5	1	2	3	4	5	1	2	3	4	5	
JAY® Soft Combi™ P	Comfort	6	1	2	3	4	5	1	2	3	4	5	1	2	3	4	5	
JAY® Zip	Comfort	7	1	2	3	4	5	1	2	3	4	5	1	2	3	4	5	
JAY® Ion™	Comfort	8	1	2	3	4	5	1	2	3	4	5	1	2	3	4	5	
JAY® Union™	Comfort	9	1	2	3	4	5	1	2	3	4	5	1	2	3.5	4	5	
JAY® Care	Comfort	10	1	2	3	4	5	1	2	3	4	5	1	2	3	4	5	
JAY® Easy™	High Needs	11	1	2	3.5	4	5	1	2	3	4	5	1	2	3.5	4	5	
JAY® X2™	High Needs	12	1	2	3	4	5	1	2	3	4	5	1	2	3	4	5	
JAY® J2™	High Needs	13	1	2	3	4	5	1	2	3	4	5	1	2	3	4.5	5	
JAY® Fusion™	High Needs	14	1	2	3	4.5	5	1	2	3	4	5	1	2	3	4.5	5	
JAY® Fusion™ with Cryo	High Needs	15	1	2	3	4.5	5	1	2	3	4	5	1	2	3	4.5	5	
JAY® J2™ Deep Contour	High Needs	16	1	2	3	4	5	1	2	3	4	5	1	2	3	4	5	
JAY® J3™	High Needs	17	1	2	3	4	5	1	2	3	4	5	1	2	3	4	5	
Specialty Cushions																		
JAY® Lite	Comfort	18	1	2	3	4	5	1	2	3	4	5	1	2	3	4	5	
JAY® Duo™	Comfort	18	1	2	3	4	5	1	2	3	4	5	1	2	3	4	5	
JAY® GS™	High Needs	19	1	2	3	4	5	1	2	3	4	5	1	2	3	4	5	
JAY® J2™ Plus	High Needs	19	1	2	3	4	5	1	2	3	4	5	1	2	3	4	5	
Backs		Type	Page #	Accommodating Postural Asymmetries					Modular Design to Accommodate Evolving Presentations					Lateral Stability				
JAY® GO	Comfort	20	1	2	3	4	5	1	2	3	4	5	1	2	3	4	5	
JAY® Basic	Comfort	20	1	2	3	4	5	1	2	3	4	5	1	2	3	4	5	
JAY® Zip	High Needs	21	1	2	3	4	5	1	2	3	4	5	1	2	3	4	5	
JAY® J3™ Posterior	High Needs	22	1	2	3	4	5	1	2	3	4	5	1	2	3	4	5	
JAY® J3™ Posterior & Lateral	High Needs	22	1	2	3	4	5	1	2	3	4	5	1	2	3	4	5	
JAY® J3™ Posterior Deep	High Needs	22	1	2	3	4	5	1	2	3	4	5	1	2	3	4	5	
JAY® J3™ Posterior & Deep Lateral	High Needs	22	1	2	3	4	5	1	2	3	4	5	1	2	3	4	5	
JAY® J3™ Posterior & Deep Contour	High Needs	22	1	2	3	4	5	1	2	3	4	5	1	2	3	4	5	
Specialty Backs																		
JAY® J2™ / J2™ Tall	High Needs	24	1	2	3	4	5	1	2	3	4	5	1	2	3	4	5	
JAY® J2 Deep Contour	High Needs	24	1	2	3	4	5	1	2	3	4	5	1	2	3	4	5	
JAY® J3™ Plus	High Needs	25	1	2	3	4	5	1	2	3	4	5	1	2	3	4	5	
JAY® Care	High Needs	25	1	2	3	4	5	1	2	3	4	5	1	2	3	4	5	
JAY® Focus Point	High Needs	26	1	2	3	4	5	1	2	3	4	5	1	2	3	4	5	
JAY® Encompass	High Needs	26	1	2	3	4	5	1	2	3	4	5	1	2	3	4	5	

CONSIDERATIONS

This guide was designed to assist you in determining which JAY Seating product will be most appropriate for your client.

Our goal when creating this guide was to show:	
FEATURE:	The materials or design used in the construction of each JAY seating product.
DESIGN INTENT:	The “why” of each component’s inclusion in the design.
CLINICAL VALUE:	The intended clinical outcome of each component’s material make-up and design intent.
COMMON CLIENT CHARACTERISTICS:	Describes the client for whom each product was designed either by clinically determined criteria or by functional needs.
JAY PRODUCT COMPARISON GUIDE:	A score per product that represents the relative ability of the product to address a clinical indication.
TECHNICAL SPECIFICATIONS AND CUSHION SIZE AVAILABILITY:	Key measurements of each JAY seating product

JAY PRODUCT COMPARISON GUIDE

The “score” per product represents the relative ability of this product to address a clinical indication as described below.

The product comparison charts are for use only to compare a JAY product to another JAY product and should not be used to compare other manufacturers’ products.

The ratings should not be taken as indicators of how effective the product will be in addressing any specific users requirements.

CUSHIONS

Lateral Stability

The ability of the cushion to support the pelvis and maintain its current position as the upper body moves forward through the coronal plane, as well as its ability to assist in preventing the pelvis from sliding forward along the cushion during such activities as foot propulsion or weight shifting.

Forward Stability

The ability of the cushion to promote a neutral pelvis during an upper body forward motion as well as its ability to assist the pelvis maintain neutral as the upper body returns to its home position along the coronal plane.

Pressure Management

The ability of the cushion to distribute loads across the entire sitting surface and to conform to bony prominences while equalizing pressure in surrounding areas.

BACKRESTS

Accommodating Postural Asymmetries

The ability of the backrest to accept external devices such as (but not limited to) headrests, laterals, and anterior trunk supports that assist the cervical, thoracic, and, at times, the lumbar spine in maintaining midline along all planes.

Modular Design to Accommodate Evolving Presentations

The ability of the backrest to accommodate external hardware, foams, or fluid pads that increase surface contact along a user’s thoracic and lumbar spine to maintain midline in coronal and sagittal planes.

The ability of the backrest’s mounting hardware to move along both the transverse and coronal plane and maximize the backrest’s surface contact area with the user.

Lateral Stability

The ability of the backrest in its standard configuration (without the addition of external lateral supports) to assist the thoracic and, at times, the lumbar spine in maintaining midline along the coronal and sagittal planes.

COMMON CLIENT CHARACTERISTICS

Evaluating Skin Integrity

In the “Common Client Characteristics” section, we address the individual’s relative risk for skin breakdown. In order to simplify, we have categorized these into three weighted risks: Low risk, Moderate risk, and High risk. Below we define these categories based on the Human Risk Factors listed.

RISK FACTORS FOR SKIN

Primary Factors

- Presence or history of skin breakdown or damage on the sitting surfaces
- Cannot or does not perform functional weight shifts for any reason

Secondary Factors

- Protruding bony prominences on the sitting surfaces
- Impaired or absent sensation on the sitting surfaces

Contributing Factors

- transfer activities
- muscle atrophy
- aging skin
- orthopedic deformities
- excessive body heat
- incontinence or excessive sweating
- disease (e.g. diabetes, cancer)
- poor nutrition

Forces or conditions that can lead to skin breakdown

- Pressure, shear, friction, moisture, heat

An individual may be at **HIGH RISK** for skin breakdown if found upon assessment to present with one or more of the following:

- a primary risk factor
- one or more secondary risk factors in combination with a number of contributing factors
- may score 6-12 on the Braden scale for predicting pressure sore risk
- Waterlow 15+

An individual may be at **MODERATE RISK** for skin breakdown if found upon assessment to present with one or more of the following:

- no primary risk factor
- a combination of secondary and/or contributing risk factors
- may score 13-18 on the Braden scale for predicting pressure sore risk
- may score 8-14 on the Waterlow

An individual may be at **LOW RISK** for skin breakdown if found upon assessment to present with one or more of the following:

- no primary or secondary risk factors
- some contributing risk factors
- may score 19-23 on the Braden scale for predicting pressure sore risk
- May score 5-8 on the Waterlow

TECHNICAL SPECIFICATION MEASUREMENT GUIDE

Below we describe the way each type of measurement has been taken in order to have consistent comparison across the product line.

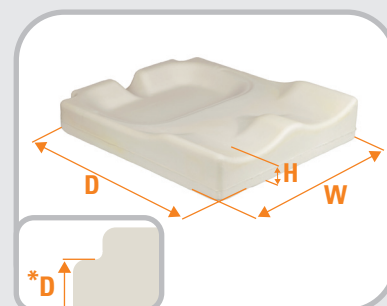
CUSHIONS

Width: Measured across the front of the cushion, at its widest point

Depth: Measured from the front to the back of the bottom of the cushion, at its longest point. (*If back post notches are present the Depth is measured to the front edge of the backpost notch.)

Height: Measured from the center of the femoral trough, where the femurs are loaded

Weight: Based on the cushion size listed in the Technical Specifications section for each product



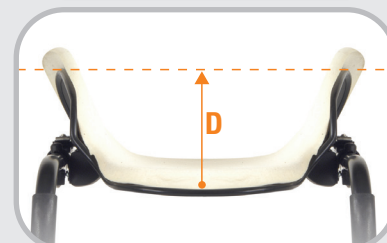
BACKRESTS

Width: Measured across the shell at its widest point

Height: Measured from the top of the shell to the bottom, at its center

Depth: Measured from the center point on the inside of the back shell to the "edge" of a dotted line from widest point to widest point.

Weight: Based on an 18" wide x 18" tall backrest



BACKREST HARDWARE

Angle Adjustability: The angle measured from the back's forward-most position to its rearward most position, measured from the top of the back

Width Adjustability: Measures the difference between the back shell width and the width of wheelchair back canes it can accommodate. i.e. A 16" wide JAY® J3™ back can be mounted on a wheelchair as wide as 18". It's width adjustability measurement is therefore 2".



JAY YOUR WAY MODIFICATIONS

In this guide, the size availability charts list standard sizes available as well as sizes available through JAY Your Way. JAY Your Way is a modification program designed to individualize JAY products. From clinical improvements to colored covers, JAY Your Way can be used to create cushions and backs manufactured to users' unique individual needs. Personalised opportunities are highlighted throughout this catalog. For more information on ordering a modification please visit the JAY Your Way product page on our website.



JAY BASIC

The JAY® Basic cushion is a soft, mildly contoured durable foam base designed for the client at very low risk of skin breakdown, who requires mild stability.

Basic Rating Scale

Side-to-Side Stability	1
Forward Stability	1
Pressure Management	1



Technical Specifications	
Waterlow	0-8
Width Range	14" to 24"
Depth Range	16" to 20"
Weight	0.85kgs (16"x18")
Height	2"
Weight Capacity	113kgs 136kgs (22-24" widths)
JAY Your Way Modifications Avail.	Yes
Positioning	No

		WIDTH												
		12"	13"	14"	15"	16"	17"	18"	19"	20"	21"	22"	23"	24"
DEPTH	12"	JYW	JYW	JYW	JYW	JYW	JYW	JYW	JYW	JYW	N/A	N/A	N/A	N/A
	13"	JYW	JYW	JYW	JYW	JYW	JYW	JYW	JYW	JYW	N/A	N/A	N/A	N/A
	14"	JYW	JYW	●	JYW	JYW	JYW	JYW	JYW	JYW	JYW	JYW	JYW	JYW
	15"	JYW	JYW	JYW	JYW	JYW	JYW	JYW	JYW	JYW	JYW	JYW	JYW	JYW
	16"	JYW	JYW	●	●	●	●	●	●	●	JYW	JYW	JYW	JYW
	17"	JYW	JYW	JYW	JYW	●	●	●	●	JYW	JYW	JYW	JYW	JYW
	18"	JYW	JYW	●	●	●	●	●	●	JYW	JYW	●	JYW	●
	19"	N/A	N/A	N/A	N/A	JYW	JYW	JYW	JYW	JYW	JYW	JYW	JYW	JYW
	20"	N/A	N/A	N/A	N/A	JYW	JYW	●	●	●	JYW	●	JYW	●
	21"	N/A	N/A	N/A	N/A	N/A	N/A	N/A	N/A	JYW	JYW	JYW	JYW	JYW
	22"	N/A	N/A	N/A	N/A	N/A	N/A	N/A	N/A	JYW	JYW	●	JYW	●
	23"	N/A	N/A	N/A	N/A	N/A	N/A	N/A	N/A	N/A	N/A	JYW	JYW	JYW
24"	N/A	N/A	N/A	N/A	N/A	N/A	N/A	N/A	N/A	N/A	JYW	JYW	●	

● Standard size available JYW Size available through JAY Your Way N/A Size not available



JAY BASICPRO™

The JAY® BasicPRO™ is a soft, moderately contoured, durable foam base with an easy-to-clean cover designed for the client at very low risk of skin breakdown, who requires mild to moderate stability.

BasicPRO Rating Scale

Side-to-Side Stability	3
Forward Stability	2
Pressure Management	1

Technical Specifications	
Waterlow	0-8
Width Range	14" to 24"
Depth Range	14" to 24"
Weight	0.85kgs (16"x18")
Height	3"
Weight Capacity	136kgs 227kgs (22-24" widths)
JAY Your Way Modifications Avail.	Yes
Positioning	No

		WIDTH												
		13"	14"	15"	15.5"	16"	17"	18"	19"	20"	21"	22"	23"	24"
DEPTH	12"	N/A	N/A	N/A	N/A	N/A	N/A	N/A	N/A	N/A	N/A	N/A	N/A	N/A
	13"	N/A	N/A	N/A	N/A	N/A	N/A	N/A	N/A	N/A	N/A	N/A	N/A	N/A
	14"	N/A	●	JYW	JYW	JYW	JYW	JYW	JYW	JYW	N/A	N/A	N/A	N/A
	15"	N/A	JYW	JYW	JYW	JYW	JYW	JYW	JYW	JYW	N/A	N/A	N/A	N/A
	16"	N/A	●	JYW	●	JYW	●	●	●	●	JYW	JYW	JYW	JYW
	17"	N/A	JYW	JYW	JYW	●	●	●	●	JYW	JYW	JYW	JYW	JYW
	18"	N/A	●	●	JYW	●	●	●	●	●	JYW	●	JYW	●
	19"	N/A	N/A	JYW	JYW	JYW	JYW	JYW	JYW	JYW	JYW	JYW	JYW	JYW
	20"	N/A	N/A	JYW	JYW	●	JYW	●	●	●	JYW	●	JYW	●
	21"	N/A	N/A	N/A	N/A	N/A	N/A	N/A	N/A	JYW	JYW	JYW	JYW	JYW
	22"	N/A	N/A	N/A	N/A	N/A	N/A	N/A	N/A	JYW	JYW	●	JYW	●
	23"	N/A	N/A	N/A	N/A	N/A	N/A	N/A	N/A	N/A	N/A	JYW	JYW	JYW
24"	N/A	N/A	N/A	N/A	N/A	N/A	N/A	N/A	N/A	N/A	JYW	JYW	●	

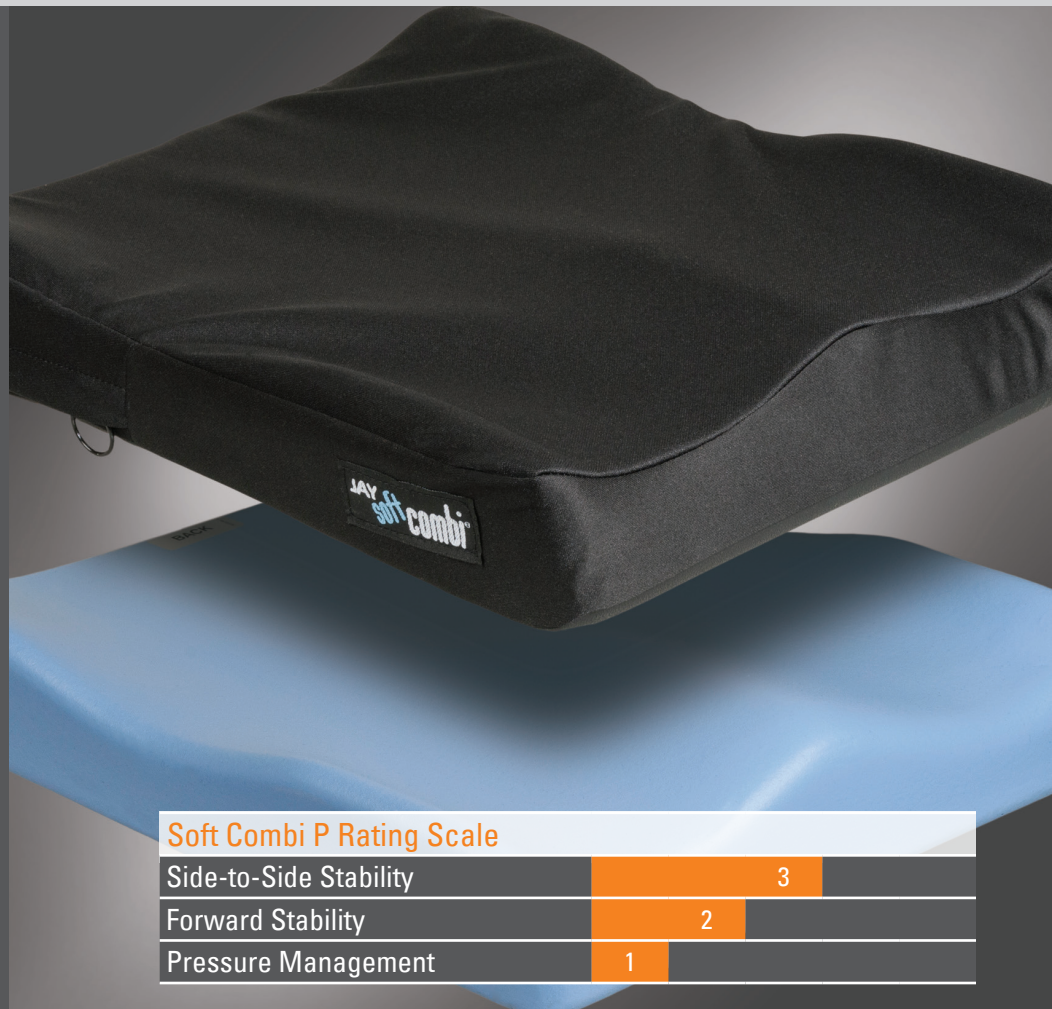
● Standard size available JYW Size available through JAY Your Way N/A Size not available

JAY SOFT COMBI™ P

The JAY® Soft Combi™ P cushion is a lightweight, soft and mildly contoured foam cushion designed for the client at low risk of skin breakdown, who requires mild to moderate postural support.

Common Client Characteristics

- May be at very low risk of skin breakdown
- May have mild positioning needs
- May require a comfortable seating surface
- May be in a wheelchair for limited periods of time



Soft Combi P Rating Scale

Side-to-Side Stability	3
Forward Stability	2
Pressure Management	1

Component	Feature	Design Intent	Clinical Value
BASE	Pre-contoured, high-resiliency foam	Provides positioning of the pelvis and thighs	Improves orthopedic alignment
	Foam outer coating	Protects foam base from moisture build up and is easy to clean	Helps with incontinence management
COVER	Moisture resistant cover	Protects foam base from moisture build up	Helps with incontinence management
	Non-slip bottom surface	Keeps cushion located properly	Reduces misalignment during use, and promotes safe transfers

Technical Specifications	
Waterlow	<10
Width Range	14" to 24"
Depth Range	14" to 18"
Weight	1.25kgs (16"x16")
Height	3"
Weight Capacity	113kgs 136kgs (22-24" widths)
JAY Your Way Modifications Avail.	Yes
Positioning	Yes

		WIDTH												
		12"	13"	14"	15"	16"	17"	18"	19"	20"	21"	22"	23"	24"
DEPTH	12"	N/A	N/A	N/A	N/A	N/A	N/A	N/A	N/A	N/A	N/A	N/A	N/A	N/A
	13"	N/A	N/A	N/A	N/A	N/A	N/A	N/A	N/A	N/A	N/A	N/A	N/A	N/A
	14"	N/A	N/A	●	N/A	JYW	JYW	JYW	JYW	JYW	N/A	N/A	N/A	N/A
	15"	N/A	N/A	JYW	N/A	JYW	JYW	JYW	JYW	JYW	N/A	N/A	N/A	N/A
	16"	N/A	N/A	●	JYW	●	●	●	●	●	N/A	JYW	N/A	JYW
	17"	N/A	N/A	JYW	JYW	●	●	●	●	●	N/A	JYW	N/A	JYW
	18"	N/A	N/A	●	●	●	●	●	●	●	N/A	●	N/A	●
	19"	N/A	N/A	N/A	N/A	JYW	N/A	JYW	JYW	JYW	N/A	JYW	N/A	JYW
	20"	N/A	N/A	N/A	N/A	●	N/A	●	●	●	N/A	●	N/A	●
	21"	N/A	N/A	N/A	N/A	N/A	N/A	N/A	N/A	N/A	N/A	JYW	N/A	JYW
	22"	N/A	N/A	N/A	N/A	N/A	N/A	N/A	N/A	N/A	N/A	N/A	N/A	●
	23"	N/A	N/A	N/A	N/A	N/A	N/A	N/A	N/A	N/A	N/A	N/A	N/A	JYW
24"	N/A	N/A	N/A	N/A	N/A	N/A	N/A	N/A	N/A	N/A	N/A	N/A	●	

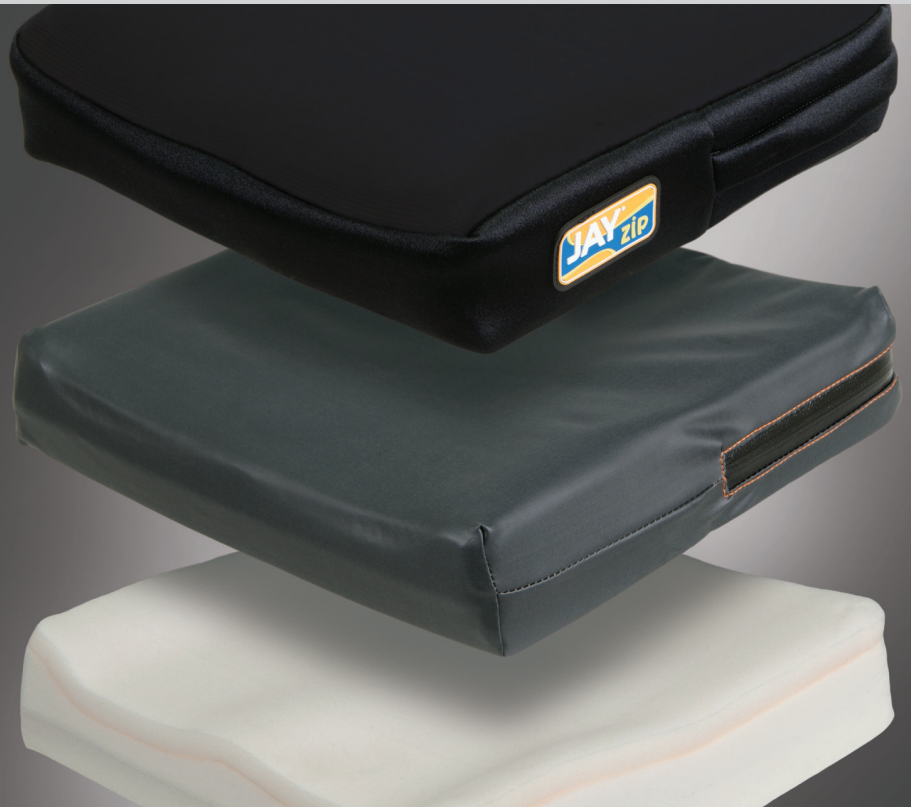
● Standard size available JYW Size available through JAY Your Way N/A Size not available

JAY ZIP

The JAY® Zip™ is an anti-microbial, convenient, and comfortable skin protection and positioning cushion designed specifically for pediatric clients.

Common Client Characteristics

- May be at a moderate risk of skin breakdown
- May be able to perform independent weight shifts
- May have moderate positioning needs
- May be in a wheelchair for extended periods of time
- Designed for pediatric clients



Zip Rating Scale

Side-to-Side Stability	3
Forward Stability	3
Pressure Management	3

Component	Feature	Design Intent	Clinical Value
BASE	Soft foam base with optimized firmness by cushion width	Optimizes cushion performance for pediatric clients with varying weights	Encourages improved orthopedic alignment and accommodates individual user needs
	Soft Visco™ memory foam top layer	Enhances comfort for pediatric clients	Increases sitting tolerance
INNER COVER	Inner cover with Aquaquard™ zipper and anti-wicking thread	Protects foam from moisture build up and is easy to clean	Helps extend the life of the cushion and reduces risk of skin breakdown
COVER	3DX™ spacer fabric layer	Dissipates heat and moisture	Reduces risk of skin breakdown
	X-static® silver thread stretch outer cover	Reduces surface tension and resists bacterial growth	Helps prevent bacterial growth and reduces risk of skin breakdown
	Standard with 2 outer covers	Allows for continued use	Allows for optimal product use during cleaning

Technical Specifications	
Waterlow	<15
Width Range	8" to 16"
Depth Range	8" to 16"
Weight	0.55kgs (12"x12")
Height	2.75"
Weight Capacity	75kgs
JAY Your Way Modifications Avail.	Yes
Positioning	No

DEPTH	WIDTH									
	8"	9"	10"	11"	12"	13"	14"	15"	16"	
8"	●	●	●	●	N/A	N/A	N/A	N/A	N/A	
9"	●	●	●	●	●	N/A	N/A	N/A	N/A	
10"	●	●	●	●	●	●	N/A	N/A	N/A	
11"	●	●	●	●	●	●	●	N/A	N/A	
12"	●	●	●	●	●	●	●	●	N/A	
13"	●	●	●	●	●	●	●	●	●	
14"	●	●	●	●	●	●	●	●	●	
15"	N/A	●	●	●	●	●	●	●	●	
16"	N/A	N/A	●	●	●	●	●	●	●	
17"	N/A	N/A	N/A	●	●	●	●	●	●	
18"	N/A	N/A	N/A	N/A	●	●	●	●	●	

● Standard size available JYW Size available through JAY Your Way N/A Size not available



Also available with optional colored cover sidebands. Colors include: Blue, Red, Toxic Green, Purple, Pink, or Black

JAY ION™

The JAY® Ion™ is a comfortable skin protection and positioning cushion composed of a multi-layered foam base, moisture resistant inner cover, and an anti microbial outer cover.

Common Client Characteristics

- May be at moderate risk of skin breakdown
- May be able to perform independent weight shifts
- May have moderate positioning needs
- May be in a wheelchair for extended periods of time



Ion Rating Scale

Side-to-Side Stability	3
Forward Stability	3
Pressure Management	3

Component	Feature	Design Intent	Clinical Value
BASE	Multi-layered foam base with optimised densities by width	Optimises cushion performance by user weight ranges	Encourages improved orthopedic alignment and accommodates individual user needs
	Soft Visco™ memory foam top layer	Enhances comfort	Increases sitting tolerance
INNER COVER	Inner cover with Aquaquard™ zipper and anti-wicking thread	Protects foam from moisture build up and is easy to clean	Helps with incontinence management
COVER	Foam spacer layer	Dissipates heat and moisture	Reduces risk of skin breakdown
	X-static® silver thread stretch outer cover	Reduce surface tension and resist bacterial growth	Helps prevent bacterial growth and reduces risk of skin breakdown

Technical Specifications	
Waterlow	<15
Width Range	14" to 24"
Depth Range	14" to 24"
Weight	1.59kgs (18"x18")
Height	4"
Weight Capacity	136kgs 227kgs (22-24" widths)
JAY Your Way Modifications Avail.	Yes
Positioning	No

		WIDTH												
		12"	13"	14"	15"	16"	17"	18"	19"	20"	21"	22"	23"	24"
DEPTH	12"	N/A	N/A	N/A	N/A	N/A	N/A	N/A	N/A	N/A	N/A	N/A	N/A	N/A
	13"	N/A	N/A	N/A	N/A	N/A	N/A	N/A	N/A	N/A	N/A	N/A	N/A	N/A
	14"	N/A	N/A	●	●	●	●	●	N/A	N/A	N/A	N/A	N/A	N/A
	15"	N/A	N/A	●	●	●	●	●	●	●	N/A	N/A	N/A	N/A
	16"	N/A	N/A	●	●	●	●	●	●	●	N/A	N/A	N/A	N/A
	17"	N/A	N/A	●	●	●	●	●	●	●	●	N/A	N/A	N/A
	18"	N/A	N/A	●	●	●	●	●	●	●	●	●	N/A	N/A
	19"	N/A	N/A	N/A	●	●	●	●	●	●	●	●	●	●
	20"	N/A	N/A	N/A	●	●	●	●	●	●	●	●	●	●
	21"	N/A	N/A	N/A	●	●	●	●	●	●	●	●	●	●
	22"	N/A	N/A	N/A	N/A	●	●	●	●	●	●	●	●	●
	23"	N/A	N/A	N/A	N/A	N/A	●	●	●	●	●	●	●	●
24"	N/A	N/A	N/A	N/A	N/A	N/A	●	●	●	●	●	●	●	

● Standard size available JYW Size available through JAY Your Way N/A Size not available

JAY UNION™

The JAY® Union™ is a versatile, comfortable, skin protection and positioning cushion composed of a dynamic fluid and foam layering system, moisture resistant inner cover and an anti-microbial outer cover.

Common Client Characteristics

- May be at moderate to high risk of skin breakdown
- May be able to perform independent weight shifts
- May have moderate positioning needs
- May be in a wheelchair for extended periods of time
- Requires No Maintenance Cushion
- Requires Soft Comfortable Cushion periods of time



Union Rating Scale	
Side-to-Side Stability	4
Forward Stability	4
Pressure Management	3.5

Component	Feature	Design Intent	Clinical Value
BASE	Pre-contoured, high-resiliency foam with additional lateral pelvic support	Provides positioning of the pelvis and thighs	Encourages improved orthopedic alignment
	Soft Visco™ memory foam top layer with extra layer over pelvic loading area	Enhances comfort	Increases sitting tolerance
INSERT	JAY® Flow™ fluid tripod	Consistently ensures proper fluid placement by reducing fluid migration	Reduces risk of skin breakdown
INNER COVER	Inner cover with Aquaquard™ zipper and anti-wicking thread	Protects foam base from moisture build up and is easy to clean	Helps with incontinence management
COVER	Foam spacer layer	Dissipates heat and moisture	Reduces risk of skin breakdown
	X-static® silver thread stretch outer cover	Reduces surface tension and resists bacterial growth	Helps prevent bacterial growth and reduces risk of skin breakdown

Technical Specifications	
Waterlow	<18
Width Range	14" to 24"
Depth Range	14" to 24"
Weight	2.4kgs (16"x18")
Height	4.5" (3.5" Reduced Profile)
Weight Capacity	136kgs 227kgs (22-24" widths)
JAY Your Way Modifications Avail.	Yes
Positioning	No

DEPTH	WIDTH												
	12"	13"	14"	15"	16"	17"	18"	19"	20"	21"	22"	23"	24"
12"	N/A	N/A	N/A	N/A	N/A	N/A	N/A	N/A	N/A	N/A	N/A	N/A	N/A
13"	N/A	N/A	N/A	N/A	N/A	N/A	N/A	N/A	N/A	N/A	N/A	N/A	N/A
14"	N/A	N/A	●	●	●	●	●	N/A	N/A	N/A	N/A	N/A	N/A
15"	N/A	N/A	●	●	●	●	●	●	●	N/A	N/A	N/A	N/A
16"	N/A	N/A	●	●	●	●	●	●	●	N/A	N/A	N/A	N/A
17"	N/A	N/A	●	●	●	●	●	●	●	●	●	N/A	N/A
18"	N/A	N/A	●	●	●	●	●	●	●	●	●	N/A	●
19"	N/A	N/A	N/A	●	●	●	●	●	●	●	●	●	●
20"	N/A	N/A	N/A	●	●	●	●	●	●	●	●	●	●
21"	N/A	N/A	N/A	N/A	N/A	●	●	●	●	●	●	●	●
22"	N/A	N/A	N/A	N/A	N/A	N/A	●	●	●	●	●	●	●
23"	N/A	N/A	N/A	N/A	N/A	N/A	N/A	●	●	●	●	●	●
24"	N/A	N/A	N/A	N/A	N/A	N/A	N/A	N/A	●	●	●	●	●

● Standard size available JYW Size available through JAY Your Way N/A Size not available

JAY CARE

The JAY® Care is a simple, moisture-resistant cushion designed to accommodate the client with a fixed posterior pelvic tilt utilizing sling style wheelchair upholstery.

Common Client Characteristics

- May be at a moderate risk of skin breakdown
- May have a fixed posterior pelvic tilt
- May have moderate positioning needs
- May have symmetrical posture
- May be in a wheelchair for extended periods of time



Care Rating Scale

Side-to-Side Stability	4
Forward Stability	4
Pressure Management	3

Component	Feature	Design Intent	Clinical Value
BASE	Pre-contoured foam with extended well	Accommodates fixed posterior pelvic tilt	Encourages orthopedic alignment and increased sitting tolerance
	Reinforced curved bottom	Reduces "hammocking" effect of seat upholstery	Provides a level base of support which promotes proper pelvic alignment
	Moisture resistant base	Protects foam base from moisture build up and is easy to clean	Helps with incontinence management
	Integrated JAY® Flow™ fluid compartmentalized pad	Ensures proper fluid placement to better accommodate a fixed posterior pelvic tilt	Reduces risk of skin breakdown
COVER	Standard with 2 covers	Allow for continued use	Allow for optimal product use during cleaning

Technical Specifications	
Waterlow	<15
Width Range	16" to 20"
Depth Range	16" to 20"
Weight	3.27kg (16"x16")
Height	2.5"
Weight Capacity	113kgs
JAY Your Way Modifications Avail.	Yes
Positioning	Yes

		WIDTH												
		12"	13"	14"	15"	16"	17"	18"	19"	20"	21"	22"	23"	24"
DEPTH	12"	N/A	N/A	N/A	N/A	N/A	N/A	N/A	N/A	N/A	N/A	N/A	N/A	N/A
	13"	N/A	N/A	N/A	N/A	N/A	N/A	N/A	N/A	N/A	N/A	N/A	N/A	N/A
	14"	N/A	N/A	N/A	N/A	N/A	N/A	N/A	N/A	N/A	N/A	N/A	N/A	N/A
	15"	N/A	N/A	N/A	N/A	N/A	N/A	N/A	N/A	N/A	N/A	N/A	N/A	N/A
	16"	N/A	N/A	N/A	N/A	N/A	N/A	N/A	N/A	N/A	N/A	N/A	N/A	N/A
	17"	N/A	N/A	N/A	N/A	N/A	N/A	N/A	N/A	N/A	N/A	N/A	N/A	N/A
	18"	N/A	N/A	N/A	N/A	●	N/A	●	N/A	●	N/A	N/A	N/A	N/A
	19"	N/A	N/A	N/A	N/A	N/A	N/A	N/A	N/A	N/A	N/A	N/A	N/A	N/A
	20"	N/A	N/A	N/A	N/A	●	N/A	●	N/A	N/A	N/A	N/A	N/A	N/A
	21"	N/A	N/A	N/A	N/A	N/A	N/A	N/A	N/A	N/A	N/A	N/A	N/A	N/A
	22"	N/A	N/A	N/A	N/A	N/A	N/A	N/A	N/A	N/A	N/A	N/A	N/A	N/A
	23"	N/A	N/A	N/A	N/A	N/A	N/A	N/A	N/A	N/A	N/A	N/A	N/A	N/A
24"	N/A	N/A	N/A	N/A	N/A	N/A	N/A	N/A	N/A	N/A	N/A	N/A	N/A	

● Standard size available JYW Size available through JAY Your Way N/A Size not available

JAY EASY™

The JAY® Easy™ is a skin protection and positioning cushion composed of a high-resiliency foam base, built-in lateral and medial thigh supports that can accommodate a curved or flat seating surface, and JAY® Flow™ fluid tripad.

Common Client Characteristics

- May be at moderate to high risk of skin breakdown
- May have moderate positioning requirements
- May have mild asymmetrical posture
- May be in a wheelchair for extended periods of time
- Required lower profile cushion
- Requires lighter weight cushion



Easy Rating Scale

Side-to-Side Stability	3.5
Forward Stability	3
Pressure Management	3.5

Component	Feature	Design Intent	Clinical Value
BASE	Pre-contoured, high-resiliency foam	Provides positioning of the pelvis and thighs	Encourages improved orthopedic alignment via a soft foam base
	Optional curved bottom	Reduces "hammocking" effect of seat upholstery	Provides a level base of support which promotes proper pelvic alignment
INSERT	JAY® Flow™ fluid tripad 1.5" fluid immersion enclosed in cover.	Consistently ensures proper fluid placement by reducing fluid migration	High pressure relief in low weight profile cushion.
COVER	Moisture resistant cover	Protects foam base from moisture build up	Helps with incontinence management
	Non-slip bottom surface	Keeps cushion located properly	Reduces misalignment during use and promotes safe transfers

Technical Specifications	
Waterlow	<18
Width Range	14" to 24"
Depth Range	14" to 24"
Weight	1.8kgs (16"x16")
Height	3"
Weight Capacity	113kgs
JAY Your Way Modifications Avail.	Yes
Positioning	Yes

		WIDTH												
		12"	13"	14"	15"	16"	17"	18"	19"	20"	21"	22"	23"	24"
DEPTH	12"	JYW	JYW	JYW	N/A	N/A	N/A	N/A	N/A	N/A	N/A	N/A	N/A	N/A
	13"	JYW	JYW	JYW	JYW	JYW	JYW	N/A	N/A	N/A	N/A	N/A	N/A	N/A
	14"	JYW	JYW	●	JYW	JYW	JYW	JYW	JYW	JYW	N/A	N/A	N/A	N/A
	15"	N/A	JYW	JYW	●	●	●	JYW	JYW	JYW	N/A	N/A	N/A	N/A
	16"	JYW	JYW	●	●	●	●	●	●	●	JYW	JYW	JYW	JYW
	17"	N/A	JYW	JYW	●	●	●	●	●	JYW	JYW	JYW	JYW	JYW
	18"	JYW	JYW	●	JYW	●	●	●	●	●	JYW	●	JYW	●
	19"	N/A	N/A	N/A	N/A	JYW	JYW	JYW	JYW	JYW	JYW	JYW	JYW	JYW
	20"	N/A	N/A	N/A	N/A	JYW	JYW	●	●	●	JYW	●	JYW	●
	21"	N/A	N/A	N/A	N/A	N/A	N/A	N/A	N/A	JYW	JYW	JYW	JYW	JYW
	22"	N/A	N/A	N/A	N/A	N/A	N/A	N/A	N/A	JYW	JYW	●	JYW	●
	23"	N/A	N/A	N/A	N/A	N/A	N/A	N/A	N/A	N/A	N/A	JYW	JYW	JYW
24"	N/A	N/A	N/A	N/A	N/A	N/A	N/A	N/A	N/A	N/A	JYW	JYW	●	

● Standard size available JYW Size available through JAY Your Way N/A Size not available

JAY X2™

The JAY® X2™ is a lightweight foam cushion designed for the active client at moderate to high risk of skin breakdown, who requires mild to moderate positioning. The soft foam base allows the client to sit at the front of the cushion comfortably.

Common Client Characteristics

- May be at moderate to high risk of skin breakdown
- May be able to perform independent weight shifts
- May have moderate positioning needs
- May be in a wheelchair for extended periods of time
- Requires lower profile cushion
- Requires flat surface under thighs



X2 Rating Scale

Side-to-Side Stability	3
Forward Stability	3
Pressure Management	4

Component	Feature	Design Intent	Clinical Value
BASE	Non-contoured, high resiliency foam	Anterior & Lateral contouring of base to enhance pelvic position.	Improved posture and skin protection
	Rear coccyx notch	Reduces peak pressures	Reduces risk of skin breakdown over coccyx bone
INSERT	JAY® Flow™ fluid tripad 1.5" fluid immersion	Consistently ensures proper fluid placement by reducing fluid migration	Reduces risk of skin breakdown
INNER COVER	Inner cover with Aquaguard™ zipper and anti-wicking thread	Protects foam from moisture build-up and is easy to clean	Reduces risk of skin breakdown for active users and helps with incontinence management
COVER	Built-in modular thigh support compartments with 1" lateral thigh supports	Provide additional positioning and easily accommodate various positioning components	Encourage improved orthopedic alignment
	Stretch cover with zipper closure	Reduces surface tension and protects foam from moisture build-up	Promotes proper immersion and reduces risk of skin breakdown
	Optional extra cover	Allows for continued use	Allows for optimal product use during cleaning

Technical Specifications	
Waterlow	<18
Width Range	14" to 20"
Depth Range	14" to 20"
Weight	1.75kgs (16"x16")
Height	2.25"
Weight Capacity	136kgs
JAY Your Way Modifications Avail.	Yes
Positioning	No

		WIDTH												
		12"	13"	14"	15"	16"	17"	18"	19"	20"	21"	22"	23"	24"
DEPTH	12"	N/A	JYW	JYW	JYW	JYW	JYW	JYW	N/A	N/A	N/A	N/A	N/A	N/A
	13"	N/A	JYW	JYW	JYW	JYW	JYW	JYW	N/A	N/A	N/A	N/A	N/A	N/A
	14"	N/A	JYW	●	JYW	JYW	JYW	JYW	N/A	N/A	N/A	N/A	N/A	N/A
	15"	N/A	JYW	JYW	●	JYW	JYW	JYW	N/A	N/A	N/A	N/A	N/A	N/A
	16"	N/A	N/A	●	●	●	●	●	JYW	JYW	N/A	N/A	N/A	N/A
	17"	N/A	N/A	N/A	JYW	●	●	JYW	JYW	JYW	N/A	N/A	N/A	N/A
	18"	N/A	N/A	N/A	JYW	●	JYW	●	JYW	JYW	N/A	N/A	N/A	N/A
	19"	N/A	N/A	N/A	JYW	JYW	JYW	JYW	JYW	JYW	N/A	N/A	N/A	N/A
	20"	N/A	N/A	N/A	JYW	●	JYW	●	JYW	●	N/A	N/A	N/A	N/A
	21"	N/A	N/A	N/A	N/A	N/A	N/A	N/A	N/A	N/A	N/A	N/A	N/A	N/A
	22"	N/A	N/A	N/A	N/A	N/A	N/A	N/A	N/A	N/A	N/A	N/A	N/A	N/A
	23"	N/A	N/A	N/A	N/A	N/A	N/A	N/A	N/A	N/A	N/A	N/A	N/A	N/A
24"	N/A	N/A	N/A	N/A	N/A	N/A	N/A	N/A	N/A	N/A	N/A	N/A	N/A	

● Standard size available JYW Size available through JAY Your Way N/A Size not available



The JAY® J2™ is a pre-contoured foam cushion that features a JAY® Flow™ fluid tripod for superior skin protection and an easy to modify base with optional positioning components for optimal stability.

Common Client Characteristics

- May be at high risk of skin breakdown
- May not be able to perform independent weight shifts
- May have changing postural needs over time
- May have aggressive positioning needs
- May be in a wheelchair for extended periods of time
- May experience weight loss



J2 Rating Scale

Side-to-Side Stability	4
Forward Stability	3
Pressure Management	4.5

Component	Feature	Design Intent	Clinical Value
BASE	Pre-contoured structural closed cell foam	Provides lateral and forward stability that is easy to modify	Encourages orthopedic alignment, increases sitting tolerance and accommodates changing user needs
	Extensive variety of positioning components (through JAY Box of Accessories or JAY Your Way)	Provides optimal stability	Encourages orthopedic alignment and accommodates individual user needs
INSERT	JAY® Flow™ fluid tripod 2" fluid immersion	Consistently ensures proper fluid placement by reducing fluid migration	Reduces risk of skin breakdown
COVER	Stretch outer cover	Reduces surface tension	Promotes proper immersion and reduces risk of skin breakdown
	AirExchange™ outer cover	Dissipates heat and moisture	Reduces risk of skin breakdown
	Incontinence outer cover	Protects foam base from moisture build-up	Helps with incontinence management

Technical Specifications	
Waterlow	20+
Width Range	14" to 24"
Depth Range	14" to 20"
Weight	2.5kgs (16"x16")
Height	2.5"
Weight Capacity	136 kg (<22" wide) 227 kg (22"-24" wide)
JAY Your Way Modifications Avail.	Yes
Positioning	Yes

		WIDTH												
		12"	13"	14"	15"	16"	17"	18"	19"	20"	21"	22"	23"	24"
DEPTH	12"	JYW	JYW	JYW	JYW	JYW	JYW	JYW	JYW	JYW	JYW	JYW	JYW	JYW
	13"	JYW	JYW	JYW	JYW	JYW	JYW	JYW	JYW	JYW	JYW	JYW	JYW	JYW
	14"	JYW	JYW	●	JYW	●	JYW	JYW	JYW	JYW	JYW	JYW	JYW	JYW
	15"	JYW	JYW	JYW	JYW	JYW	JYW	JYW	JYW	JYW	JYW	JYW	JYW	JYW
	16"	JYW	JYW	JYW	JYW	●	JYW	●	JYW	●	JYW	JYW	JYW	JYW
	17"	JYW	JYW	JYW	JYW	JYW	●	JYW	JYW	JYW	JYW	JYW	JYW	JYW
	18"	JYW	JYW	JYW	JYW	●	JYW	●	JYW	●	JYW	JYW	JYW	JYW
	19"	JYW	JYW	JYW	JYW	JYW	JYW	JYW	JYW	JYW	JYW	JYW	JYW	JYW
	20"	N/A	N/A	JYW	JYW	JYW	JYW	●	JYW	●	JYW	JYW	JYW	●
	21"	N/A	N/A	JYW	JYW	JYW	JYW	JYW	JYW	JYW	JYW	JYW	JYW	JYW
	22"	N/A	N/A	JYW	JYW	JYW	JYW	JYW	JYW	JYW	JYW	JYW	JYW	JYW
	23"	N/A	N/A	JYW	JYW	JYW	JYW	JYW	JYW	JYW	JYW	JYW	JYW	JYW
24"	N/A	N/A	JYW	JYW	JYW	JYW	JYW	JYW	JYW	JYW	JYW	JYW	JYW	

● Standard size available JYW Size available through JAY Your Way N/A Size not available

JAY FUSION™

The JAY® Fusion™ is an adjustable cushion designed for skin protection that features JAY® Flow™ fluid or JAY® air insert options in a package that's comfortable, stable and supportive.

Common Client Characteristics

- May be at high risk of skin breakdown
- May not be able to perform independent weight shifts
- May have changing postural needs over time
- May have aggressive positioning needs
- May be in a wheelchair for extended periods of time
- May experience weight loss



Fusion Rating Scale

Side-to-Side Stability	4.5
Forward Stability	4
Pressure Management	4.5

Component	Feature	Design Intent	Clinical Value
BASE	Pre-contoured closed cell foam base	Provides lateral and forward stability that is easy to modify	Encourages orthopedic alignment, increases sitting tolerance and accommodates changing user needs
	Pre-contoured, soft foam layer with posterior pelvic wall	Provides positioning of the pelvis and thighs and reduces fluid migration	Postural support with comfort
INSERT	Optional JAY® Flow™ fluid pad	Consistently ensures proper fluid placement by reducing fluid migration	Reduces risk of skin breakdown
	Optional JAY® AIR INSERT air bladder available in single valve or dual valve options	Allows personalisation of air levels to optimize immersion and accommodate asymmetric postures	Reduces risk of skin breakdown
INNER COVER	Inner cover with Aquaquard™ zipper and anti-wicking thread	Protects foam base from moisture build up and is easy to clean	Helps with incontinence management
COVER	X-static® silver thread stretch outer cover	Reduces surface tension and resist bacterial growth	Helps prevent bacterial growth and reduces risk of skin breakdown

Technical Specifications	
Waterlow	25+
Width Range	14" to 24"
Depth Range	14" to 24"
Weight	2.4kgs 16"x18" w/fluid
Height	4"
Weight Capacity	136kgs (14-21" widths)
	227kgs (22-24" widths)
JAY Your Way Modifications Avail.	Yes
Positioning	Yes

DEPTH	WIDTH													
	12"	13"	14"	15"	16"	17"	18"	19"	20"	21"	22"	23"	24"	
12"	N/A	JYW	JYW	JYW	JYW	JYW	JYW	N/A	N/A	N/A	N/A	N/A	N/A	
13"	N/A	JYW	JYW	JYW	JYW	JYW	JYW	JYW	JYW	JYW	JYW	N/A	N/A	
14"	N/A	JYW	●	●	●	●	●	JYW	JYW	JYW	JYW	N/A	N/A	
15"	N/A	JYW	●	●	●	●	●	●	●	JYW	JYW	JYW	JYW	
16"	N/A	JYW	●	●	●	●	●	●	●	JYW	JYW	JYW	JYW	
17"	N/A	JYW	●	●	●	●	●	●	●	●	●	JYW	JYW	
18"	N/A	JYW	●	●	●	●	●	●	●	●	●	JYW	JYW	
19"	N/A	JYW	JYW	●	●	●	●	●	●	●	●	●	●	
20"	N/A	JYW	JYW	●	●	●	●	●	●	●	●	●	●	
21"	N/A	JYW	JYW	●	●	●	●	●	●	●	●	●	●	
22"	N/A	N/A	N/A	JYW	●	●	●	●	●	●	●	●	●	
23"	N/A	N/A	N/A	N/A	JYW	●	●	●	●	●	●	●	●	
24"	N/A	N/A	N/A	N/A	N/A	JYW	●	●	●	●	●	●	●	

● Standard size available JYW Size available through JAY Your Way N/A Size not available

JAY FUSION™ WITH CRYO

JAY® Fluid with Cryo Technology is a patent-pending, revolutionary wheelchair cushion material that actively cools a patient's seated skin surface for up to 8 hours* while evenly distributing pressure, reducing shear, and lowering the risk of moisture.

Common Client Characteristics

- May be at high risk for skin breakdown due to seat surface interface temperature, humidity and moisture
- May be at high risk for skin breakdown due to pressure
- May have changing postural needs over time
- May have aggressive positioning needs
- May be in wheelchair for extended periods of time



Reduced Profile Option

Fusion Rating Scale

Side-to-Side Stability	4.5
Forward Stability	4
Pressure Management	4.5

Component	Feature	Design Intent	Clinical Value
BASE	Pre-contoured closed cell foam base	Provides lateral and forward stability that is easy to modify	Encourages orthopedic alignment, increases sitting tolerance and accommodates changing user needs
	Pre-contoured, soft foam layer with posterior pelvic wall	Provides positioning of the pelvis and thighs and reduces fluid migration	Posterior support with comfort
INSERT	Optional JAY® Flow™ with Cryo Technology fluid pad	Consistently ensures proper fluid placement by reducing fluid migration. Actively cools cushion surface for upto 8 hours	Reduces risk of skin breakdown due to heat, moisture at surface interface
	Optional JAY® AIR INSERT air bladder available in single valve or dual valve options	Allows personalisation of air levels to optimize immersion and accommodate asymmetric postures	Reduces risk of skin breakdown
INNER COVER	Inner cover with Aquaquard™ zipper and anti-wicking thread	Protects foam base from moisture build up and is easy to clean	Helps with incontinence management
COVER	X-static® silver thread stretch outer cover	Reduces surface tension and resist bacterial growth	Helps prevent bacterial growth and reduces risk of skin breakdown

Technical Specifications	
Waterlow	25+
Width Range	16" to 20"
Depth Range	16" to 22"
Weight	2.4kgs 16"x18" w/fluid)
Height	4"
Weight Capacity	136kgs (16-21" widths) 227kgs (22" widths)
JAY Your Way Modifications Avail.	Yes
Positioning	Yes

		WIDTH											
		14"	15"	16"	17"	18"	19"	20"	21"	22"	23"	24"	
DEPTH	14"	N/A	N/A	JYW	JYW	JYW	JYW	JYW	JYW	JYW	N/A	N/A	
	15"	N/A	N/A	JYW	JYW	JYW	JYW	JYW	JYW	JYW	N/A	N/A	
	16"	N/A	N/A	●	●	●	●	●	JYW	JYW	N/A	N/A	
	17"	N/A	N/A	●	●	●	●	●	JYW	JYW	N/A	N/A	
	18"	N/A	N/A	●	●	●	●	●	●	●	N/A	N/A	
	19"	N/A	N/A	●	●	●	●	●	●	●	N/A	N/A	
	20"	N/A	N/A	●	●	●	●	●	●	●	N/A	N/A	
	21"	N/A	N/A	JYW	●	●	●	●	●	●	N/A	N/A	
	22"	N/A	N/A	JYW	JYW	●	●	●	●	●	N/A	N/A	
	23"	N/A	N/A	JYW	JYW	JYW	JYW	JYW	JYW	JYW	N/A	N/A	
	24"	N/A	N/A	N/A	JYW	JYW	JYW	JYW	JYW	JYW	N/A	N/A	

● Standard size available JYW Size available through JAY Your Way N/A Size not available

JAY J2™ DEEP CONTOUR

The JAY® J2™ Deep Contour is a pre-contoured foam cushion that features a 3" deep pelvic loading area, a JAY® Flow™ fluid tripod for superior skin protection and an easy to modify base for optimal stability.

Common Client Characteristics

- May be at extremely high risk of skin breakdown
- May not be able to perform independent weight shifts
- May have changing postural needs over time
- May be in a wheelchair for extended periods of time
- May experience weight loss



J2 Deep Contour Rating Scale

Side-to-Side Stability	4
Forward Stability	4
Pressure Management	5

Component	Feature	Design Intent	Clinical Value
BASE	Pre-contoured structural closed cell foam	Provides lateral and forward stability that is easy to modify	Encourages orthopedic alignment, increases sitting tolerance and accommodates changing user needs
	Increased well depth	Provides optimal immersion and increased stability	Encourages orthopedic alignment and accommodates individual user needs
INSERT	JAY® Flow™ fluid tripod with increased fluid volume (3" fluid immersion)	Consistently ensures proper fluid placement by reducing fluid migration	Reduces risk of skin breakdown
COVER	Stretch outer cover	Reduces surface tension	Promotes proper immersion and reduces risk of skin breakdown
	AirExchange™ outer cover	Dissipates heat and moisture	Reduces risk of skin breakdown
	Incontinence outer cover	Protects foam base from moisture build up	Helps with incontinence management

Technical Specifications	
Waterlow	25+
Width Range	14" to 24"
Depth Range	14" to 20"
Weight	2.85kgs (16"x16")
Height	4.5"
Weight Capacity	136 kg (<22" wide) 227 kg (22"-24" wide)
JAY Your Way Modifications Avail.	Yes
Positioning	Yes

DEPTH	WIDTH													
	12"	13"	14"	15"	16"	17"	18"	19"	20"	21"	22"	23"	24"	
12"	N/A	JYW	JYW	N/A	N/A	N/A	N/A	N/A	N/A	N/A	N/A	N/A	N/A	
13"	N/A	JYW	JYW	JYW	N/A	N/A	N/A	N/A	N/A	N/A	N/A	N/A	N/A	
14"	N/A	JYW	●	JYW	JYW	JYW	JYW	JYW	JYW	JYW	JYW	JYW	JYW	
15"	N/A	JYW	JYW	●	JYW	JYW	JYW	JYW	JYW	JYW	JYW	JYW	JYW	
16"	N/A	JYW	●	JYW	●	JYW	●	JYW	●	JYW	●	JYW	JYW	
17"	N/A	N/A	JYW	●	JYW	●	JYW	JYW	JYW	JYW	JYW	JYW	JYW	
18"	N/A	N/A	JYW	JYW	●	JYW	●	JYW	●	JYW	●	JYW	●	
19"	N/A	N/A	JYW	JYW	JYW	JYW	JYW	JYW	JYW	JYW	JYW	JYW	JYW	
20"	N/A	N/A	N/A	JYW	●	JYW	●	JYW	●	JYW	JYW	JYW	JYW	
21"	N/A	N/A	N/A	JYW	JYW	JYW	JYW	JYW	JYW	JYW	JYW	JYW	JYW	
22"	N/A	N/A	N/A	JYW	JYW	JYW	JYW	JYW	JYW	JYW	JYW	JYW	JYW	
23"	N/A	N/A	N/A	JYW	JYW	JYW	JYW	JYW	JYW	JYW	JYW	JYW	JYW	
24"	N/A	N/A	N/A	JYW	JYW	JYW	JYW	JYW	JYW	JYW	JYW	JYW	JYW	

● Standard size available JYW Size available through JAY Your Way N/A Size not available

JAY J3™

The JAY® J3™ cushion provides outstanding stability and optimal pressure distribution for the client at high risk of skin breakdown, and offers the choice of JAY® Flow™ fluid or JAY® air insert.

Common Client Characteristics

- May be at high risk for skin breakdown
- May not be able to perform independent weight shifts
- May have changing postural needs over time
- May have aggressive positioning needs
- May be in a wheelchair for extended periods of time



J3 Rating Scale

Side-to-Side Stability	5
Forward Stability	4
Pressure Management	4

Component	Feature	Design Intent	Clinical Value
BASE	Pre-contoured structural closed cell foam available in two depths	Provides lateral and forward stability that is easy to modify	Encourages orthopedic alignment, increases sitting tolerance and accommodates changing user needs
	Extensive variety of positioning components	Provides optimal stability	Encourages orthopedic alignment and accommodates individual user needs
	Individualised Pelvic Loading Area (PLA)	Lateral stability, forward stability, and pressure distribution	Encourages orthopedic alignment
INSERT	Optional JAY®Flow™ fluid pad available in Factory Filled (FF) and Field Variable (FV) options	Allows personalisation of fluid levels direct from the factory or in the field to optimize immersion and accommodate asymmetric postures	Reduces risk of skin breakdown
	Optional JAY® AIR INSERT air bladder available in single valve or dual valve options	Allows personalisation of air levels to optimize immersion and accommodate asymmetric postures	Reduces risk of skin breakdown
COVER	Stretch outer cover	Reduces surface tension	Promotes proper immersion and reduces risk of skin breakdown
	Microclimatic outer cover	Dissipates heat and moisture	Reduces risk of skin breakdown
	Incontinence outer cover	Protects foam base from moisture build up	Helps with incontinence management

Technical Specifications	
Waterlow	<18-20
Width Range	12" to 24"
Depth Range	12" to 24"
Weight	2.04kgs (16"x18" w/fluid) 1.3kgs (16"x18" w/dual air)
Height	3.5" (loaded w/175 lbs)
Weight Capacity	227kgs
JAY Your Way Modifications Avail.	Yes
Positioning	Yes

		WIDTH													
		12"	13"	14"	15"	16"	17"	18"	19"	20"	21"	22"	23"	24"	
DEPTH	12"	●	JYW	●	JYW	N/A	N/A	N/A	N/A	N/A	N/A	N/A	N/A	N/A	
	13"	JYW	JYW	JYW	JYW	N/A	N/A	N/A	N/A	N/A	N/A	N/A	N/A	N/A	
	14"	●	JYW	●	JYW	JYW	JYW	JYW	JYW	JYW	JYW	JYW	JYW	JYW	
	15"	JYW	JYW	JYW	●	●	●	JYW	JYW	JYW	JYW	JYW	JYW	JYW	
	16"	JYW	JYW	●	●	●	●	●	●	●	JYW	JYW	JYW	JYW	
	17"	JYW	JYW	JYW	●	●	●	●	●	JYW	JYW	JYW	JYW	JYW	
	18"	JYW	JYW	●	JYW	●	●	●	●	●	●	●	●	●	
	19"	JYW	JYW	JYW	JYW	JYW	JYW	JYW	JYW	JYW	●	●	●	●	
	20"	JYW	JYW	JYW	JYW	●	JYW	●	●	●	●	●	●	●	
	21"	JYW	JYW	JYW	JYW	JYW	JYW	JYW	JYW	JYW	●	●	●	●	
	22"	JYW	JYW	JYW	JYW	JYW	JYW	JYW	JYW	JYW	●	●	●	●	
	23"	N/A	N/A	N/A	N/A	JYW	JYW	JYW	JYW	JYW	JYW	JYW	JYW	JYW	
24"	N/A	N/A	N/A	N/A	JYW	JYW	JYW	JYW	JYW	JYW	JYW	JYW	●		

● Standard size available JYW Size available through JAY Your Way N/A Size not available

JAY LITE

The JAY® Lite is an extremely lightweight foam cushion that provides good pressure distribution, heat and moisture dissipation and optimal stability in a maintenance free design. Cushion features breathable cover that whisks away moisture.

Lite Rating Scale

Side-to-Side Stability	5
Forward Stability	3
Pressure Management	2



Technical Specifications	
Waterlow	<15
Width Range	14" to 24"
Depth Range	14 to 24"
Weight	0.75kgs (16"x16")
Height	3.4" , 4.5"
Weight Capacity	113kgs
JAY Your Way Modifications Avail.	Yes
Positioning	Yes

		WIDTH													
		12"	13"	14"	15"	16"	17"	18"	19"	20"	21"	22"	23"	24"	
DEPTH	12"	N/A	N/A	N/A	N/A	N/A	N/A	N/A	N/A	N/A	N/A	N/A	N/A	N/A	
	13"	N/A	N/A	N/A	N/A	N/A	N/A	N/A	N/A	N/A	N/A	N/A	N/A	N/A	
	14"	N/A	N/A	●	JYW	JYW	JYW	JYW	JYW	JYW	N/A	N/A	N/A	N/A	
	15"	N/A	N/A	JYW	●	●	●	JYW	JYW	JYW	JYW	N/A	N/A	N/A	
	16"	N/A	N/A	●	●	●	●	●	●	●	JYW	JYW	N/A	N/A	
	17"	N/A	N/A	JYW	●	●	●	●	●	JYW	JYW	JYW	JYW	N/A	
	18"	N/A	N/A	●	●	●	●	●	●	●	JYW	●	JYW	●	
	19"	N/A	N/A	N/A	JYW	●	JYW	●	JYW	JYW	JYW	JYW	JYW	JYW	
	20"	N/A	N/A	N/A	N/A	●	JYW	●	●	●	JYW	●	JYW	●	
	21"	N/A	N/A	N/A	N/A	N/A	JYW	JYW	JYW	JYW	JYW	JYW	JYW	JYW	
	22"	N/A	N/A	N/A	N/A	N/A	N/A	JYW	JYW	JYW	JYW	●	JYW	●	
	23"	N/A	N/A	N/A	N/A	N/A	N/A	N/A	JYW	JYW	JYW	JYW	JYW	JYW	
	24"	N/A	N/A	N/A	N/A	N/A	N/A	N/A	N/A	JYW	JYW	JYW	JYW	●	

● Standard size available JYW Size available through JAY Your Way N/A Size not available



JAY DUO™

The JAY® Duo™ features an integrated, contoured solid seat pan with a soft foam and fluid seat cushion. The Duo provides optimal comfort and skin protection perfect for clients that need low seat heights for foot propulsion or safe transfers.

Duo Rating Scale

Side-to-Side Stability	2
Forward Stability	3
Pressure Management	4

Technical Specifications	
Waterlow	<15
Width Range	16" to 20"
Depth Range	16" to 18"
Weight	2.6kgs (16"x16")
Height	2.5"
Weight Capacity	113kgs
JAY Your Way Modifications Avail.	Yes
Positioning	Yes

		WIDTH													
		12"	13"	14"	15"	16"	17"	18"	19"	20"	21"	22"	23"	24"	
DEPTH	12"	N/A	N/A	N/A	N/A	N/A	N/A	N/A	N/A	N/A	N/A	N/A	N/A	N/A	
	13"	N/A	N/A	N/A	N/A	N/A	N/A	N/A	N/A	N/A	N/A	N/A	N/A	N/A	
	14"	N/A	N/A	N/A	N/A	N/A	N/A	N/A	N/A	N/A	N/A	N/A	N/A	N/A	
	15"	N/A	N/A	N/A	N/A	N/A	N/A	N/A	N/A	N/A	N/A	N/A	N/A	N/A	
	16"	N/A	N/A	N/A	N/A	●	●	●	N/A	●	N/A	N/A	N/A	N/A	
	17"	N/A	N/A	N/A	N/A	N/A	N/A	N/A	N/A	N/A	N/A	N/A	N/A	N/A	
	18"	N/A	N/A	N/A	N/A	●	●	●	N/A	●	N/A	N/A	N/A	N/A	
	19"	N/A	N/A	N/A	N/A	N/A	N/A	N/A	N/A	N/A	N/A	N/A	N/A	N/A	
	20"	N/A	N/A	N/A	N/A	N/A	N/A	N/A	N/A	N/A	N/A	N/A	N/A	N/A	
	21"	N/A	N/A	N/A	N/A	N/A	N/A	N/A	N/A	N/A	N/A	N/A	N/A	N/A	
	22"	N/A	N/A	N/A	N/A	N/A	N/A	N/A	N/A	N/A	N/A	N/A	N/A	N/A	
	23"	N/A	N/A	N/A	N/A	N/A	N/A	N/A	N/A	N/A	N/A	N/A	N/A	N/A	
	24"	N/A	N/A	N/A	N/A	N/A	N/A	N/A	N/A	N/A	N/A	N/A	N/A	N/A	

● Standard size available JYW Size available through JAY Your Way N/A Size not available

JAY GS™

The JAY® GS™ incorporates the technologies of JAY® Flow™ fluid and includes growth capabilities to allow the cushion to grow as the client grows. It is designed for the pediatric or adult client with high positioning needs who is at moderate to high risk of skin breakdown.

GS Rating Scale

Side-to-Side Stability	4
Forward Stability	3
Pressure Management	3



Technical Specifications	
Waterlow	20+
Width Range	10" to 18"
Depth Range	13" to 20"
Weight	3.1kgs
Height	2"
Weight Capacity	113kgs
JAY Your Way Modifications Avail.	Yes
Positioning	No

		WIDTH												
		10"	11"	12"	13"	14"	15"	16"	17"	18"	19"	20"	21"	22"
DEPTH	10"	JYW	JYW	JYW	N/A	N/A	N/A	N/A	N/A	N/A	N/A	N/A	N/A	N/A
	11"	JYW	JYW	JYW	N/A	N/A	N/A	N/A	N/A	N/A	N/A	N/A	N/A	N/A
	12"	JYW	JYW	JYW	JYW	JYW	JYW	JYW	JYW	JYW	N/A	N/A	N/A	N/A
	13"	●	JYW	JYW	JYW	JYW	JYW	JYW	JYW	JYW	JYW	N/A	N/A	N/A
	14"	JYW	JYW	JYW	JYW	JYW	JYW	JYW	JYW	JYW	JYW	JYW	JYW	JYW
	15"	JYW	JYW	●	JYW	JYW	JYW	JYW	JYW	JYW	JYW	JYW	JYW	JYW
	16"	N/A	JYW	JYW	JYW	JYW	JYW	JYW	JYW	JYW	JYW	JYW	JYW	JYW
	17"	N/A	JYW	JYW	JYW	●	JYW	JYW	JYW	JYW	JYW	JYW	JYW	JYW
	18"	N/A	JYW	JYW	JYW	JYW	JYW	JYW	JYW	JYW	JYW	JYW	JYW	JYW
	19"	N/A	N/A	N/A	JYW	JYW	JYW	●	JYW	JYW	JYW	JYW	JYW	JYW
	20"	N/A	N/A	N/A	JYW	JYW	JYW	JYW	JYW	●	JYW	JYW	JYW	JYW
	21"	N/A	N/A	N/A	JYW	JYW	JYW	JYW	JYW	JYW	JYW	JYW	JYW	JYW
22"	N/A	N/A	N/A	N/A	N/A	JYW	JYW	JYW	JYW	JYW	JYW	JYW	JYW	

● Standard size available JYW Size available through JAY Your Way N/A Size not available



JAY J2™ PLUS

The JAY® J2™ Plus, offering a weight capacity of 295kgs, is a pre-contoured foam cushion designed for bariatric clients requiring moderate positioning and pressure relief.

J2 Plus Rating Scale

Side-to-Side Stability	4
Forward Stability	3
Pressure Management	4

Technical Specifications	
Waterlow	N/A
Width Range	20" to 26"
Depth Range	18" to 22"
Weight	3.2kgs (20"x20")
Height	3.5"
Weight Capacity	295kgs
JAY Your Way Modifications Avail.	Yes
Positioning	Yes

		WIDTH												
		14"	15"	16"	17"	18"	19"	20"	21"	22"	23"	24"	25"	26"
DEPTH	14"	N/A	N/A	N/A	N/A	N/A	N/A	N/A	N/A	N/A	N/A	N/A	N/A	N/A
	15"	N/A	N/A	N/A	N/A	N/A	N/A	N/A	N/A	N/A	N/A	N/A	N/A	N/A
	16"	N/A	N/A	N/A	N/A	N/A	N/A	N/A	N/A	N/A	N/A	N/A	N/A	N/A
	17"	N/A	N/A	N/A	N/A	N/A	N/A	N/A	N/A	N/A	N/A	N/A	N/A	N/A
	18"	N/A	N/A	N/A	N/A	N/A	N/A	●	●	●	●	●	●	●
	19"	N/A	N/A	N/A	N/A	N/A	N/A	●	●	●	●	●	●	●
	20"	N/A	N/A	N/A	N/A	N/A	N/A	●	●	●	●	●	●	●
	21"	N/A	N/A	N/A	N/A	N/A	N/A	●	●	●	●	●	●	●
	22"	N/A	N/A	N/A	N/A	N/A	N/A	●	●	●	●	●	●	●
	23"	N/A	N/A	N/A	N/A	N/A	N/A	N/A	N/A	N/A	N/A	N/A	N/A	N/A
	24"	N/A	N/A	N/A	N/A	N/A	N/A	N/A	N/A	N/A	N/A	N/A	N/A	N/A

● Standard size available JYW Size available through JAY Your Way N/A Size not available

JAY GO

The JAY® GO Back features tension adjustable upholstery with 2" foam covered with a Dartex® moisture-resistant cover for adjustability, convenience, and support.

GO Back Rating Scale

Accommodating Postural Asymmetries	1
Modular Design for Evolving Presentations	1
Lateral Stability	1

Common Client Characteristics

- May benefit from minimal posterior pelvic/thoracic support
- May prefer to not remove the back support in order to fold wheelchair for transport



Technical Specifications

Width Range	12" to 26"
Height	10" to 14" (Short) 15" to 19" (Tall)
Weight	0.77kgs (18" wide, Tall)
Weight Capacity	136kgs 227kgs (22-24" widths)
Avail. Hardware Styles	Velcro® back post attachment
Angle Adjustability	N/A
Width Adjustability	+2" to +4"
Fits Tubing Sizes	All
Headrest Mount Available	No
JAY Your Way Modifications Avail.	Yes

Component	Feature	Design Intent	Clinical Value
STRAP ASSEMBLY	Wide Velcro® adjustment straps	Provide adjustable posterior pelvic stability	Support a larger surface area and discourage development of asymmetrical postures
FOAM	1 1/2" soft foam insert	Comfort	Promotes increased sitting tolerance
COVER	Dartex® coated Lycra® outer cover	Protects foam from moisture build up and is easy to clean	Helps with incontinence management
	Microclimatic cover	Dissipates heat and moisture	Reduces risk of skin breakdown

JAY BASIC

The JAY® Basic Back is designed to increase sitting tolerance and stability by adding a rigidising component to the wheelchair back.

Basic Back Rating Scale

Accommodating Postural Asymmetries	1
Modular Design for Evolving Presentations	1
Lateral Stability	1

Common Client Characteristics

- May benefit from mild posterior pelvic and thoracic support
- May require quick and easy removal of back shell from wheelchair



Technical Specifications

Width Range	14" to 20"
Height	16", 18", 20"
Weight	0.7kgs (Strap) 1.64kgs (Clamp)
Weight Capacity	113kgs
Avail. Hardware Styles	4-Point or Strap
Angle Adjustability	10°
Width Adjustability	+1"
Fits Tubing Sizes	7/8" and 1"
Headrest Mount Available	No
JAY Your Way Modifications Avail.	No

Component	Feature	Design Intent	Clinical Value
SHELL	Rigid contoured shell	Provides posterior pelvic and mild lateral thoracic stability	Helps prevent development of asymmetrical postures
FOAM	Soft foam insert	Enhances comfort	Promotes increased sitting tolerance
HARDWARE	Optional clamp style	Offers angle adjustability with minimal loss of seat depth	Improves visual field range, respiratory and digestive functions
	Optional strap style	Allows for easy installation and removal	Promotes increased sitting tolerance and stability
COVER	Stretch outer cover	Reduces surface tension	Promotes proper immersion and reduces risk of skin breakdown

JAY ZIP

The JAY® Zip™ is a lightweight, anti-microbial, and adjustable back designed to provide posterior and mild lateral thoracic support for active paediatric clients.



Technical Specifications	
Width Range	8" to 14" 6" (Short) 8" (Medium) 10" (Tall) 12" (Extra Tall)
Height	1.1kgs
Weight	75kgs
Weight Capacity	2-Point
Avail. Hardware Styles	40°
Angle Adjustability	+1"
Width Adjustability	3/4" to 1"
Fits Tubing Sizes	Yes
Headrest Mount Available	Yes
JAY Your Way Modifications Avail.	Yes

Zip Back Rating Scale

Accommodating Postural Asymmetries	3
Modular Design for Evolving Presentations	4
Lateral Stability	2

Common Client Characteristics

- May require mild to maximum lateral stability
- May require moderate spinus process protection
- May require quick and easy removal of back shell from wheelchair
- May require mounting surface for head support
- May require additional positioning components (Spine Align)
- Designed for paediatric clients

Component	Feature	Design Intent	Clinical Value
SHELL	Contour designs that vary by backrest width	Provide appropriate posterior pelvic and lateral thoracic stability for pediatric clients	Promote proper postural positioning and help prevent development of asymmetrical postures while encouraging a greater level of independence
	Four support heights and shapes	Offer appropriate trunk support for paediatric clients with varying torso heights and levels of injury	Promote proper level of support based on client's functional needs and necessary trunk stability
FOAM	Extra soft foam insert	Enhances comfort and distributes pressure for paediatric clients	Increases sitting tolerance and reduces risk of skin breakdown
HARDWARE	Quick release hardware with 40° of angle adjustability, 3" of depth adjustment, and 1" of width adjustment	Accommodates rapid growth, varying user needs, and a wide range of wheelchair configurations	Increases visual orientation and improves digestion and respiratory function
INNER COVER	Inner cover with Aquaguard™ zipper and anti-wicking thread	Protects foam from moisture build-up and is easy to clean	Increases user comfort and sitting tolerance
OUTER COVER	3DX™ spacer fabric layer	Dissipates heat and moisture	Reduces risk of skin breakdown
	X-static® silver thread stretch outer cover	Reduces surface tension and resists bacterial growth	Helps prevent bacterial growth and reduces risk of skin breakdown
	Optional colored covers (colors include: blue, red, purple, pink, and toxic green)	Allow for personalization	Allow for personalization
ACCESSORIES	Spine Align posture conforming inserts	Allow proper adjustment in the field to accommodate clients' unique and changing needs	Contour to individual shape and maximize loading surface
	Whitmyer® head support options	Provide posterior and lateral support of the head and neck	Increase visual orientation and improve speech, digestion, and respiratory function
	Lateral thoracic supports available with fixed, swing-away, or offset hardware and curved or flat pads	Provide lateral thoracic stability and positioning	Promote proper postural positioning and help prevent development of asymmetrical postures while encouraging a greater level of independence

JAY J3™

The JAY® J3™ backrest product line offers a multitude of width, height, and contour depth back shells to fit the back to the user. Each back is lightweight and adjustable, with numerous hardware choices allowing for easy installation.



Jay J3 Carbon Back

Technical Specifications	
Width Range	12" to 26"
Height	6.5", 8", 9.5" (Lower Thoracic) 12", 13.5", 15" (Mid Thoracic) 16.5", 18", 19.5" (Upper Thoracic) 21", 22.5", 24" (Shoulder Height)
Weight Cap.	136kgs (12" to 20" width) 227kgs (22" to 26" width)
Available Hardware Styles	SH, RH/RHF, TH, 4-Point
Angle Adjust.	+/- 20°
Width Adjust.	+2"
Fits Tubing Size	3/4" to 1 1/8"
Headrest Mount	Yes (select heights)
JAY Your Way Modifications Available	Yes

J3 Posterior (PA)

Accommodating Postural Asymmetries	3
Modular Design for Evolving Presentations	4
Lateral Stability	2

J3 Posterior Lateral (PL)

Accommodating Postural Asymmetries	4
Modular Design for Evolving Presentations	4
Lateral Stability	3

J3 Posterior Deep (PD) J3 Posterior Deep Lateral (PDL) J3 Posterior Deep Contour (PDC)

Accommodating Postural Asymmetries	4
Modular Design for Evolving Presentations	5
Lateral Stability	5

Common Client Characteristics

- May require maximum posterior pelvic stability
- May require mild to maximum lateral stability
- May require moderate spinus process protection
- May require an open back angle to encourage trunk extension and visual orientation
- May require quick and easy removal of back shell from wheelchair
- May require mounting surface for head support
- May require additional positioning components (Spine Align)

Component	Feature	Design Intent	Clinical Value
SHELL	Five contour designs. Options include Posterior (PA), Posterior Lateral (PL), Posterior Deep (PD), Posterior Deep Lateral (PDL) and Posterior Deep Contour (PDC).	Provide posterior pelvic and lateral thoracic stability	Promotes proper postural positioning and helps prevent development of asymmetrical postures while encouraging a greater level of independence
	Up to 4 support heights and shapes dependent on contour shell selected. Options include lower thoracic, mid thoracic, upper thoracic or shoulder height.	Offers appropriate trunk support for a wide range of user torso heights and levels of injury	Promotes proper level of support based on client's functional needs and necessary trunk stability
	Optional Heavy Duty shell with 227kgs weight capacity	Provides posterior pelvic and lateral thoracic stability	Promotes proper postural positioning and helps prevent development of asymmetrical postures while encouraging a greater level of independence
	Carbon Fiber shell	Provides a lighter weight option to complement ultra lightweight wheelchairs	Reduces overall weight of mobility system for increased propulsion efficiency
FOAM	1.5" thick, soft foam insert	Enhances comfort and distributes pressure	Increases sitting tolerance and reduces risk of skin breakdown
HARDWARE	4 Hardware options. RH-2-point option, optimized for use with ultra lightweight wheelchair. SH-standard 2-point option. TH-2-point option, optimized for the use with tilt-in-space wheelchairs. 4-Point-4-point, heavy duty	Offer angle and width adjustability for a wide range of chair configurations and user needs	Increase visual orientation, and improve digestion and respiratory function
INNER COVER	Optional moisture-resistant inner cover	Protects foam from moisture build-up and is easy to clean	Increases user comfort and sitting tolerance
OUTER COVER	Microclimatic with 3DX™ Spacer Fabric and Lycra® stretch outer layer (additional options available through JAY® Your Way)	Dissipates heat and moisture and provides a smooth sitting surface	Reduces risk of skin breakdown and increases user comfort and sitting tolerance
ACCESSORIES	Spine Align posture conforming inserts	Allow proper adjustment in the field to accommodate clients unique and changing needs	Contour to individual shape and maximize loading surface
	CradleU Adjustable Fixed Lateral (fixed and swing-away lateral supports also available)	Adjusts the contour of the back to provide lateral thoracic stability and positioning for clients presenting with postural deviations or asymmetries	Promotes proper postural positioning and helps prevent development of asymmetrical postures while encouraging a greater level of independence
	Whitmyer® head support options	Provide posterior and lateral support of the head and neck	Increase visual orientation and improve speech, digestion, and respiratory function



PDC
Shoulder
Height



PDL
Shoulder
Height



PD
Upper Thoracic
Height



PL
Upper Thoracic
Height



PA
Mid Thoracic
Height



PA
Lower Thoracic
Height

JAY J2 / J2 TALL

The JAY® J2™ Back is designed to provide posterior lateral pelvic stability along with enhanced trunk stability. It is lightweight and angle adjustable allowing for easy installation, fitting and removal to fold the wheelchair.

Technical Specifications	
Width Range	12" to 20"
Height	12.5" to 16.5" (Std) 21" to 23" (Tall)
Weight	2.1kgs
Weight Capacity	113kgs
Avail. Hardware Styles	4-Point
Angle Adjustability	15°
Fits Tubing Sizes	7/8" to 1"
Headrest Mount Available	Yes
JAY Your Way Modifications Avail.	Yes



J2 / J2 Tall Back Rating Scale

Accommodating Postural Asymmetries	2
Modular Design for Evolving Presentations	4
Lateral Stability	2

JAY J2 DEEP CONTOUR

The JAY® J2™ Deep Contour Back is designed to provide posterior lateral pelvic stabilization along with enhanced trunk stability. It features a deep contoured shell, foam insert, AirExchange™ cover, two lateral support wedges, and two lateral posterior pelvic supports for modified stability.

Technical Specifications	
Width Range	14" to 20"
Height	17" to 20"
Weight	2.7kgs
Weight Capacity	113kgs
Avail. Hardware Styles	4-Point
Angle Adjustability	15°
Width Adjustability	up to 2" w/offset hrdwr
Fits Tubing Sizes	7/8" to 1"
Headrest Mount Available	Yes
JAY Your Way Modifications Avail.	Yes



J2 Deep Contour Back Rating Scale

Accommodating Postural Asymmetries	4
Modular Design for Evolving Presentations	4
Lateral Stability	5

JAY J3 PLUS

The JAY® J3™ Plus Back is a backrest specifically designed to address the pelvic and trunk stability needs of bariatric clients.



Technical Specifications	
Width Range	22", 24", 26"
Height	12"-21"
Weight Capacity	227kgs
Avail. Hardware Styles	Heavy Duty 4-Point
Angle Adjustability	20°
Width Adjustability	+2"
Fits Tubing Sizes	3/4" to 1-1/8"
Headrest Mount Available	Yes
JAY Your Way Modifications Avail.	Yes

J3 Plus Back Rating Scale

Accommodating Postural Asymmetries	3
Modular Design for Evolving Presentations	3
Lateral Stability	3

JAY CARE

The JAY® Care Back was designed to accommodate a client with a fixed kyphotic thoracic spine by providing built-in lateral support, 39° of angle adjustability, and a personalised foam insert in a contoured shell.



Technical Specifications	
Width Range	15" to 20"
Height	16.5" to 19"
Weight	2kgs
Weight Capacity	113kgs
Avail. Hardware Styles	4-Point
Angle Adjustability	39°
Width Adjustability	+2"
Fits Tubing Sizes	7/8" to 1"
Headrest Mount Available	No
JAY Your Way Modifications Avail.	No

Care Back Rating Scale

Accommodating Postural Asymmetries	5
Modular Design for Evolving Presentations	2
Lateral Stability	4

JAY FOCUS POINT

The JAY® Focus Point Back is a three-piece contoured backrest featuring a reinforced contoured aluminum shell, multi-adjustable lateral “wings”. This back offers a “Lateral Hug” to promote an upright trunk.

Technical Specifications	
Width Range	14” to 21”
Height	14” to 20”
Weight	3.5kgs
Weight Capacity	113kgs
Avail. Hardware Styles	4-Point
Angle Adjustability	65°
Width Adjustability	+1”
Fits Tubing Sizes	7/8”, 1”, 1-1/8”
Headrest Mount Available	Yes
JAY Your Way Modifications Avail.	No



Focus Point Back Rating Scale

Accommodating Postural Asymmetries	3	
Modular Design for Evolving Presentations	4	
Lateral Stability	5	

JAY ENCOMPASS

The JAY® Encompass Back is a fully individualised seating solution that offers a wide range of sizes and specifications, including adapted laterals and foam selections. Its three-piece swing-away laterals provide outstanding lateral and anterior stability without inhibiting the ability to transfer.

Technical Specifications	
Width Range	14” to 25”
Height	12” to 28”
Weight	4kgs +
Weight Capacity	113kgs
Avail. Hardware Styles	4-Point
Angle Adjustability	15°
Width Adjustability	N/A
Fits Tubing Sizes	7/8” and 1”
Headrest Mount Available	Yes
JAY Your Way Modifications Avail.	No



Encompass Back Rating Scale

Accommodating Postural Asymmetries	3	
Modular Design for Evolving Presentations	4	
Lateral Stability	5	

OPTIONS AND ACCESSORIES

Please see the product pages for detailed standard availability.

COVERS

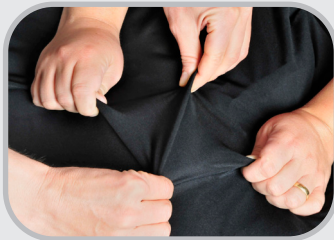
The following cover options are available on select products through the JAY Your Way modification program.

SEALED INNER COVER

- Designed to be used underneath outer JAY® cover
- Stretchable Lycra® reduces surface tension
- Polyurethane coating is easy to wipe off and clean
- Aquaguard zipper and anti-wicking seam thread prevent moisture from damaging the foam base

JAY STRETCH ZIPPER COVER

- Pleated, 4-way Stretch material reduces surface tension
- Zipper provides a secure fit and protection for the foam base



INCONTINENT RESISTANT SHOWER CAP OR ZIPPER COVER

- Semi-plastic coating can be wiped off and dried to prevent moisture build-up
- Semi-plastic coating prevents moisture from damaging the foam base
- Shower Cap edge makes cover easy to remove
- Zipper provides a secure fit and protection for the foam base



X-STATIC® COVER WITH BREATHABLE SPACER FABRIC

- Silver-impregnated material inhibits bacterial growth
- 4-Way stretch reduces surface tension
- Breathable Spacer Fabric promotes airflow



DARTEX® COVER WITH AQUAGUARD™ ZIPPER

- Cloth surface prevents sliding
- 4-Way Stretch reduces surface tension
- Dartex® coating and Aquaguard zipper prevent moisture from damaging the foam base



REVERSE DARTEX® COVER WITH AQUAGUARD ZIPPER

- Water-resistant Reverse Dartex® coating is easy to wipe off and clean
- 4-Way Stretch reduces surface tension
- Aquaguard zipper prevents moisture from damaging the foam base



ACCESSORIES

JAY LUMBAR SUPPORT

- Provides mild support of the lumbar spine
- Helps reduce lower back fatigue and increase sitting tolerance



JAY SOLID SEAT

- Improves posture by providing a firm, fully adjustable base of support
- Drop seat option
- Includes mounting hardware



JAY PROTECTOR

- Provides pressure reduction on a limited basis while the user is sitting or moving about away from the wheelchair
- Fluid-filled cushion helps reduce pressure while foam base assists in stable sitting



OPTIONS AND ACCESSORIES

Please see the product pages for detailed standard availability.

BACK HARDWARE

TWO-POINT/SH

- One attachment point on each back cane
- Simple and quick installation
- Angle height & depth adjustable
- Quick release



RH / RHF*

- One attachment point on each back cane
- Lightest hardware solution (quick-release)
- Angle height & depth adjustable
- Quick-release and fixed options available



TH*

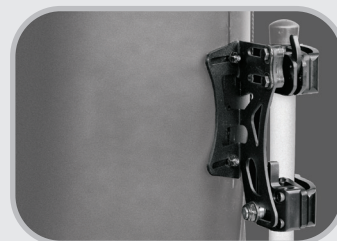
- One attachment point on each back cane
- Angle height & depth adjustable
- Lengthened bracket and pin accommodate heavier users or clients with high tone
- Perfect complement for tilt-in-space wheelchairs



*Available exclusively on J3 Back.

FOUR-POINT

- Two attachment points on each back cane
- Withstands greater force and weight by distributing it across a wider area
- Provides rigid mount to wheelchair
- When combined with a Heavy Duty back shell, accommodates increased weight capacities
- Angle height & depth adjustable



STRAP

- One strap on each side
- Cloth straps click around back posts for easy installation
- Used with the wheelchair's back Upholstery



LATERAL SUPPORTS

FIXED

- Provides customized lateral thoracic support
- Width and height adjustable



SWING-AWAY

- Provides customized lateral thoracic support
- Width and height adjustable
- Swing-away hardware allows for easy transfers out of the wheelchair



ANGLE-ADJUSTABLE SWING-AWAY

- Provides customized lateral thoracic support
- Width and height adjustable
- Swing-away hardware allows for easy transfers out of the wheelchair
- Angle adjustability provides the most precise shape to match the user's posture



CRADLE U™

- Provides customized lateral thoracic support for clients with postural or spinal deviations
- Adjusts the existing contour of the JAY J3 back to match the client's unique shape
- Intuitive design attaches directly to the back shell beneath the foam
- Support plates adjust in angle to match the user's torso



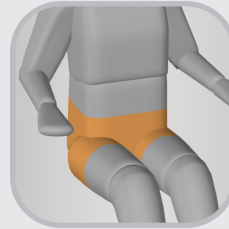
JAY POSITIONING SUPPORTS

For specific positioning needs, choose from JAY's portfolio of Positioning Supports to complement your JAY cushion and back.



HEAD Positioning

Head Supports using our portfolio of Whitmyer™ Headrests provide posterior, lateral, and occasionally anterior support of the head and neck for clients who may have difficulty maintaining an upright head posture or are using tilt-in-space wheelchairs. Options include numerous pad styles and configurations, six mounting hardware styles, and three cover materials for thousands of possible headrest configurations to meet your client's needs.



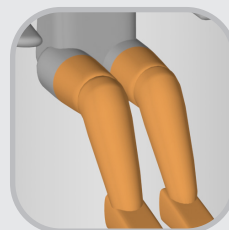
PELVIC Positioning

Pelvic Positioning Belts help encourage and maintain a stable and aligned pelvis, which impacts the positioning of the entire body. Options include varying styles and sizes, single- or dual-pull adjustments, and push button or side release buckles for ease of use.



UPPER BODY Positioning

Anterior Trunk Supports encourage an upright posture and support the torso for improved respiratory function, head positioning, and upper extremity control. Options include six support styles and either structured or dynamic construction.



LOWER BODY Positioning

Shoe Holders help maintain positioning of the feet and ankles, broadening the seating "footprint", and improving overall posture.



Hand & Arm Supports help maintain a comfortable and optimal position of the hands and arms for improved upper body posture and head control, and reduce the risk of skin breakdown.



Foot Boxes reduce the risk of skin breakdown and/or client injury that may result from periods of high tone or continual contact with the hangers and footplates.



GLOSSARY OF TERMS

The following is a glossary of terms that will aid in understanding terminology used in the rehab field and in this JAY catalog.

Activities of Daily Living

Daily activities performed by an individual in the home and/or outdoor environments. The ability or inability to perform these activities is commonly used as a means to measure an individual's function.

Anthropometric Data

Relating to the measurement of the size and proportions of the human body. Used in seating technology to determine foam firmness as it relates to cushion width.

Bony Prominence

Area of body where bone is projected. Common sites for soft tissue breakdown. May include the coccyx, ischial tuberosities or sacrum.

Bottoming Out

A condition that occurs when a client's tissue under the bony prominence displaces or compresses through the pressure-relieving material to an underlying hard surface.

Braden Scale

A validated risk assessment tool used to identify individuals at risk to develop pressure sores.

Coccyx

Commonly referred to as the tailbone, the coccyx is the lowest point of the vertebral column.

Decubitus Ulcer

(also referred to as pressure sores or bedsores)

A skin lesion caused by such factors as unrelieved pressure, shearing, humidity, etc., most commonly seen over bony areas such as the ischial tuberosities. Decubitus ulcers are often preventable and very difficult to treat.

Immersion

The ability of the user to sink into a sitting surface for optimal pressure distribution and stability without increasing surface tension.

Ischial Tuberosity

Two bony prominences (seat bones) in the buttocks.

Lateral Thigh Support

Helps prevent high excessive or unwanted abduction of the hips or provides a counterpoint for control of hip external rotation.

Lateral Trunk Support

Helps provide lateral support to the thoracic spine.

Medial Thigh Support

Helps maintain the hips of the seated individual in a prescribed amount of abduction or prevents adduction of the hips.

Pelvic Loading Area

(also referred to as PLA, OptiWell, or well)

The pre-contoured area of a cushion where the pelvis is immersed. The Pelvic Loading Area, or well, is important for pressure distribution and positioning.

Pelvic Obliquity

One side of the pelvis is lower than the other.

Pressure

Force/area.

Posterior Pelvic Tilt

Backward tilting of the top of the pelvis.

Sacrum

Lowest section of the spine, includes the coccyx and posterior aspect of the pelvis.

Scapula

The flat, triangular bone in the back of the shoulder (shoulder blade).

Shear

Friction that occurs when skin slides along the surface of a cushion. This Irritation can result in skin breakdown.

Sitting Tolerance

The ability of an individual to remain in a comfortable seated position. Discomfort and pain can reduce sitting tolerance.

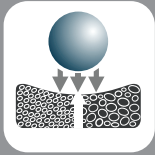
Thoracic Kyphosis

The outward curvature of the thoracic spine.

Trochanter

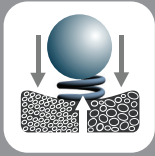
The bony prominence in the upper femurs where the hip connects with the pelvis.

PRODUCT DESIGN TERMS



Foam Density

Measured by pounds per cubic foot (PCF), foam density influences its durability. Regardless of foam firmness (or spring) it's important that density remains above 2.5 PCF for proper durability.



Foam Firmness

The spring back property of foam. Also referred to as IFD (Indentation Force Deflection), foam firmness is unrelated to its density.



Firmness Layering

The use of multiple layers of materials with varying firmness to change a cushion's ability to distribute load. A common form of firmness layering is to use a firmer material under the thighs and a softer material under the ischial tuberosities to redistribute the load to the thigh region, helping to reduce the chance of tissue breakdown under the ischial tuberosities.



Hydrostatic Force

A force that is in balance or equally distributed. Hydrostatic forces occur in objects that immerse in fluids (liquid or gas). That is why people say they feel weightless when floating in water. Hydrostatic loading evenly distributes pressure to reduce buildup under sensitive areas of the pelvis which helps prevent decubitus ulcers. Because it is impractical to sit in a bowl of water, fluids (liquid or gas) must be held in a closed container. It is imperative that these containers be flexible and deep enough to easily reshape (allowing displacement) to accommodate the contour of the pelvis. If a fluid can't displace, it won't hydrostatically distribute the load.



Microclimatic Material

Microclimatic material is a material that encourages the passage of air, heat and water vapor away from the user. Tissue breakdown has been attributed to excess heat and moisture.



Positioning Capability

The creation of a shape by using one or a combination of the following techniques; pre-contouring, modifying the cushion material, adding or subtracting components, or controlling the volume and location of fluid. Without the ability to properly position, users who have either flexible or fixed postural abnormalities are at risk for increased skeletal problems.



Pre-contouring

The removal or reshaping of material to create a new shape that encourages distribution of seated pressure by matching the contours of the human body. Pre-contouring encourages distribution of seated pressure, offers stabilizing capabilities, increases comfort and sitting tolerance and can prevent the formation of decubitus ulcers.

Pressure Distribution vs. Peak Pressure Reduction

Pressure distribution is the act of evenly distributing, or equalizing, pressure over the entire sitting surface or contact area. Peak pressure reduction is the act of reducing pressure from at risk areas of the body that tend to bear the majority of the body's load, such as the ischial tuberosities or scapula.



Segmentation

Segmentation is the division of a material into segments to reduce tension within the material. Without segmentation, material tension prevents the pelvis from properly immersing into a material such as foam, gel or an air bladder. Segmentation allows these materials to better conform to the shape of the user, which effectively reduces peak pressures.



Stability

Stability is a cushion's ability to provide both lateral and forward stability. Poor postural stability can easily lead to:

- Skeletal deformities such as kyphosis, scoliosis, and lordosis.
- A poor hip position that compromises the pressure-relieving properties of the cushion.
- The increased likelihood of falling out of a seat or being unable to return to upright.



Tension Reduction

Tension is the state of being stretched or strained. It is important that cover materials do not hinder the ability of the user to immerse into the cushion or back material, as proper immersion, increases contact area and helps reduce peak pressure areas. Segmented foam and fluid containers also aid in tension reduction.

